

Product datasheet for **AP03006PU-N**

Lat2 Rabbit Polyclonal Antibody

Product data:

Product Type:	Primary Antibodies
Applications:	WB
Recommended Dilution:	Suitable for Western Blotting under Non-reducing conditions: 1 µg/ml Positive control: mouse spleen. Sample preparation: Mix lysate with non-reducing SDS-PAGE sample buffer.
Reactivity:	Mouse
Host:	Rabbit
Clonality:	Polyclonal
Immunogen:	Recombinant N-terminal cytoplasmic domain (aa 124-203) of mouse NTAL.
Specificity:	The polyclonal antibody recognizes N-terminal cytoplasmic domain of mouse Non-T cell Activation Linker (NTAL), also known as LAB (linker of activated B cells), a 25 kDa transmembrane adaptor protein present in membrane microdomains (rafts) of B cells, NK cells and myeloid cells. Negative Species: Human.
Formulation:	PBS, pH 7.4 with 15 mM sodium azide as preservative. State: Aff - Purified State: Liquid purified IgG fraction (> 95% pure by SDS-PAGE).
Concentration:	lot specific
Purification:	Protein-A affinity chromatography.
Conjugation:	Unconjugated
Storage:	Store the antibody undiluted at 2-8°C for one month or (in aliquots) at -20°C for longer. Avoid repeated freezing and thawing.
Stability:	Shelf life: one year from despatch.
Gene Name:	linker for activation of T cells family, member 2
Database Link:	Entrez Gene 56743 Mouse Q9JHLO



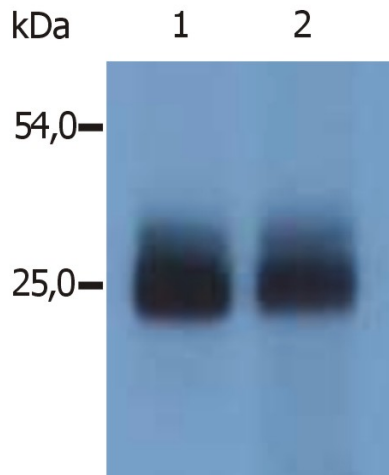
[View online »](#)

Background:

NTAL (Non-T cell activation linker), also known as LAB (Linker for activation of B cells), is a 30 kDa double-palmitoylated transmembrane adaptor protein expressed by B cells, NK cells, mast cells and macrophages. It is a negative regulator of early stages of BCR-dependent B cell signaling and serves as a negative regulator also in mast cells. However, in mast cells, NTAL also contributes to some activation processes, partially overlapping with LAT function.

Synonyms:

LAB, NTAL, WBS15, WBSCR5, HSPC046

Product images:

Western Blotting analysis (non-reducing conditions) of mouse NTAL in mouse spleen tissue. Lane 1: immunostaining with polyclonal anti-NTAL antibody Lane 2: immunostaining with polyclonal anti-mouse NTAL antibody (specific for N-terminal domain of mouse NTAL)