

Product datasheet for **AP02799PU-N**

BAD pSer136/99 Rabbit Polyclonal Antibody

Product data:

Product Type:	Primary Antibodies
Applications:	IHC, WB
Recommended Dilution:	Immunohistochemistry on paraffin sections: 1:50 - 1:100. Western blot: see ref. 1.
Reactivity:	Human, Mouse, Rat
Host:	Rabbit
Clonality:	Polyclonal
Immunogen:	Synthesized phosphopeptide derived from mouse BAD around the phosphorylation site of serine136
Specificity:	BAD (phospho-Ser136) antibody detects endogenous levels of BAD only when phosphorylated at Serine 136.
Formulation:	Phosphate buffered saline (without Mg ²⁺ and Ca ²⁺), pH 7.4, 150mM NaCl, 0.02% sodium azide and 50% glycerol State: Aff - Purified State: Liquid Ig fraction
Concentration:	lot specific
Purification:	Affinity chromatography using epitope-specific phosphopeptide
Conjugation:	Unconjugated
Storage:	Store the antibody (in aliquots) at -20 °C. Avoid repeated freezing and thawing.
Stability:	Shelf life: One year from despatch.
Gene Name:	BCL2 associated agonist of cell death
Database Link:	Entrez Gene 572 Human Q92934



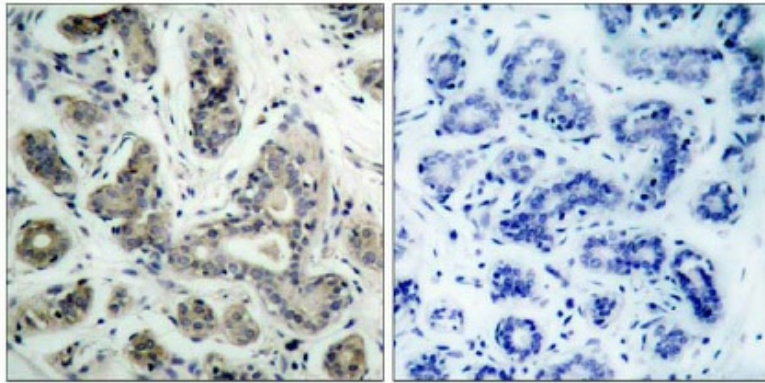
[View online »](#)

Background:

Bad is a member of the Bcl2 family and acts to promote apoptosis by forming heterodimers with the survival proteins Bcl2 and BclxL, thus preventing them from binding with BAX. Bad is found on the outer mitochondrial membrane and, once phosphorylated in response to growth stimuli, translocates to the cytoplasm. The phosphorylation status of Bad represents a key checkpoint for death or cell survival. JNK-induced phosphorylation of BAD serine 128 promotes the apoptotic role of Bad by opposing the inhibitory effect of growth factor on Bad-mediated apoptosis. Cdc2-induced phosphorylation of Bad serine 128 has an inhibitory effect on its interaction with 14-3-3 proteins. The latter interaction is critical for Bad phosphorylation at serine 155, a site within the BH3 domain that leads to the release of BclxL and the promotion of cell survival. Alternative splicing of this gene results in two transcript variants which encode the same isoform.

Synonyms:

BAD, BBC6, BCL2L8, Bcl-2-like protein 8, Bcl2-L-8

Product images:

P-Peptide

-

+

Immunohistochemical analysis of paraffin-embedded human breast carcinoma tissue using BAD (phospho-Ser136) antibody