

Product datasheet for **AP02798PU-S**

NIBAN1 Rabbit Polyclonal Antibody

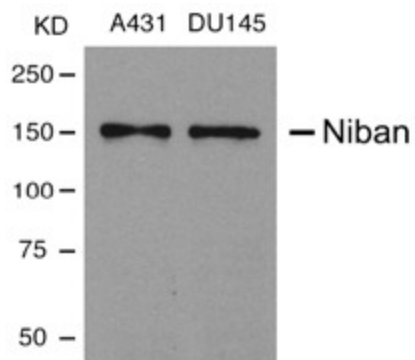
Product data:

Product Type:	Primary Antibodies
Applications:	IF, WB
Recommended Dilution:	Western Blot: 1/500~1/1000. Immunofluorescence: 1/100~1/200.
Reactivity:	Human
Host:	Rabbit
Clonality:	Polyclonal
Immunogen:	The antiserum was produced against a synthesized peptide Corresponding to the 908-920 amino-acid sequence from human Niban protein.
Specificity:	This antibody detects endogenous levels of total Niban protein.
Formulation:	PBS (without Mg ²⁺ and Ca ²⁺), pH 7.4, 150 mM NaCl, 0.02% Sodium Azide and 50% Glycerol. State: Aff - Purified State: Liquid purified Ig fraction.
Concentration:	lot specific
Purification:	Immunoaffinity Chromatography using epitope-specific immunogen.
Conjugation:	Unconjugated
Storage:	Store the antibody (in aliquots) at -20°C. Avoid repeated freezing and thawing.
Stability:	Shelf life: One year from despatch.
Gene Name:	family with sequence similarity 129 member A
Database Link:	Entrez Gene 116496 Human Q9BZQ8
Background:	FAM129A belongs to the Niban family of proteins, and is expressed in renal carcinoma cells, but not in normal kidneys.
Synonyms:	FAM129A, C1orf24, NIBAN, GIG39

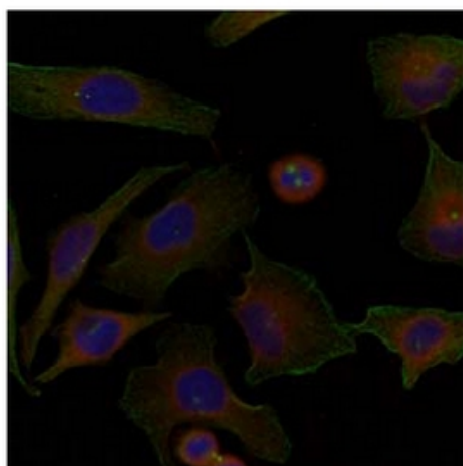


[View online »](#)

Product images:



Western Blot analysis of extracts from A431 and DU145 cells using Niban antibody



Immunofluorescence staining of methanol-fixed HeLa cells using Niban antibody (Red).