

## Product datasheet for **AP02796PU-N**

### PTPN11 / PTP2C Rabbit Polyclonal Antibody

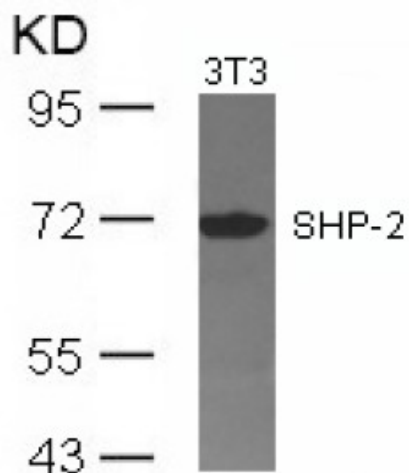
#### Product data:

Product Type:	Primary Antibodies
Applications:	IF, IHC, WB
Recommended Dilution:	Western blot: 1/500~1/1000. Immunofluorescence: 1/100~1/200. Immunohistochemistry on Paraffin-Embedded Sections: 1/50~1/100.
Reactivity:	Human, Mouse, Rat
Host:	Rabbit
Clonality:	Polyclonal
Immunogen:	The antiserum was produced against synthesized non-phosphopeptide derived from human SHP-2 around the phosphorylation site of Tyrosine 542 (H-E-Y $\rho$ -T-N).
Specificity:	This antibody detects endogenous levels of total PTPN11/SHP-2 protein.
Formulation:	PBS (without Mg <sup>2+</sup> and Ca <sup>2+</sup> ), pH 7.4, 150 mM NaCl, 0.02% Sodium Azide and 50% Glycerol. State: Aff - Purified State: Liquid purified Ig fraction.
Concentration:	lot specific
Purification:	Immunoaffinity Chromatography using epitope-specific immunogen.
Conjugation:	Unconjugated
Storage:	Store the antibody (in aliquots) at -20°C. Avoid repeated freezing and thawing.
Stability:	Shelf life: One year from despatch.
Gene Name:	protein tyrosine phosphatase, non-receptor type 11
Database Link:	<a href="#">Entrez Gene 5781 Human Q06124</a>
Background:	SHP2 is a protein tyrosine phosphatase that is widely expressed and plays a regulatory role in various cell signaling events that are important for many cell functions, such as mitogenic activation, metabolic control, transcription regulation, and cell migration.
Synonyms:	SHPTP2, PTP-1D, PTP-2C, SH-PTP2, SHP-2, Shp2, SH-PTP3

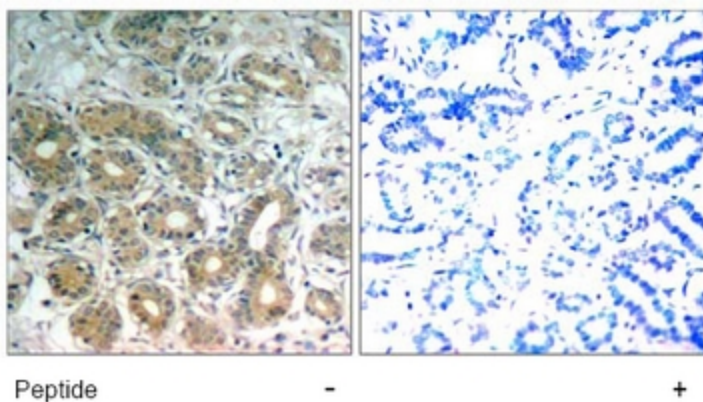


[View online »](#)

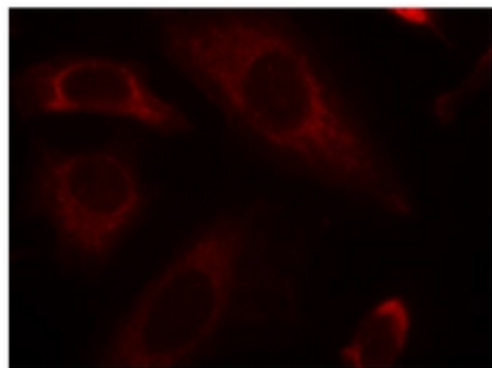
Product images:



Western Blot analysis of extracts from 3T3 cells using SHP-2 antibody



Immunohistochemical analysis of paraffin-embedded human breast carcinoma tissue, using SHP-2 antibody.



Immunofluorescence staining of methanol-fixed HeLa cells using SHP-2 antibody (Red).