

## Product datasheet for **AP02794PU-N**

### SHC (SHC1) Rabbit Polyclonal Antibody

#### Product data:

Product Type:	Primary Antibodies
Applications:	IF, IHC, WB
Recommended Dilution:	Western blot: 1/500~1/1000. Immunofluorescence: 1/100~1/200. Immunohistochemistry on Paraffin-Embedded Sections: 1/50~1/100.
Reactivity:	Human, Mouse, Rat
Host:	Rabbit
Clonality:	Polyclonal
Immunogen:	The antiserum was produced against synthesized non-phosphopeptide derived from human Shc1 around the phosphorylation site of Tyrosine 427 (P-S-Yp-V-N).
Specificity:	This antibody detects endogenous levels of total Shc1 protein.
Formulation:	PBS (without Mg <sup>2+</sup> and Ca <sup>2+</sup> ), pH 7.4 containing 150mM NaCl, 0.02% sodium azide and 50% glycerol. State: Aff - Purified State: Liquid purified IgG
Concentration:	lot specific
Purification:	Immunoaffinity Chromatography using epitope-specific immunogen.
Conjugation:	Unconjugated
Storage:	Store the antibody (in aliquots) at -20°C. Avoid repeated freezing and thawing.
Stability:	Shelf life: One year from despatch.
Gene Name:	SHC adaptor protein 1
Database Link:	<a href="#">Entrez Gene 6464 Human P29353</a>



[View online »](#)

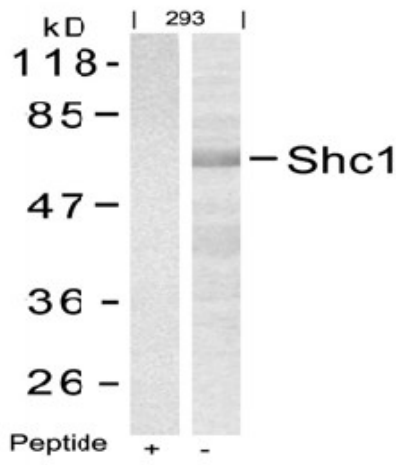
**Background:**

The SHC gene encodes for a signaling and transforming protein containing Src homology 2 and 3 (SH2 and SH3) domains. The SHC gene encodes 2 widely expressed overlapping proteins of 46 and 52 kD, both containing a C-terminal SH2 domain. Adjacent to the SH2 region is a glycine and proline rich region. These 2 proteins differ in their N terminals. SHC proteins are involved in mitogenic signal transduction and act by coupling growth factor receptors to the RAS signaling pathway.

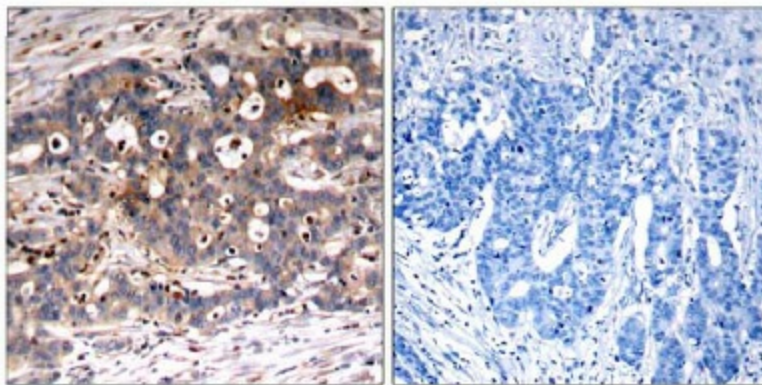
The protein encoded by the SHC1 gene is thought to act as an adaptor in many signal transduction pathways.

**Synonyms:**

SHC-transforming protein 1, SHC-transforming protein A, SHC-transforming protein 3, SHCA

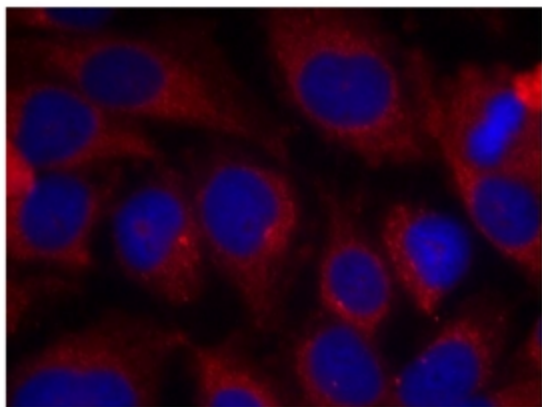
**Product images:**


Western Blot analysis of extracts from 293 cells using Shc1 antibody and the same antibody preincubated with blocking peptide



Peptide - +

Immunohistochemical analysis of paraffin-embedded human breast carcinoma tissue, using Shc1 antibody.



Immunofluorescence staining of methanol-fixed HeLa cells using Shc1 antibody (Red).