

Product datasheet for **AP02790PU-S**

Cytokeratin 8 (KRT8) Rabbit Polyclonal Antibody

Product data:

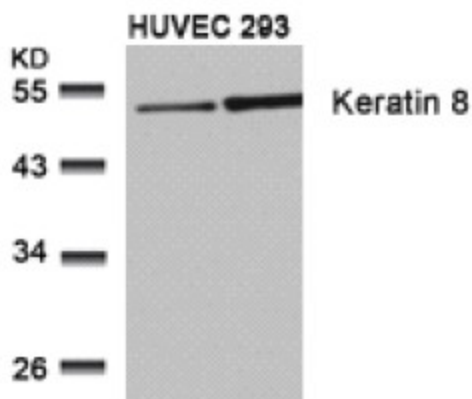
| | |
|-----------------------|---|
| Product Type: | Primary Antibodies |
| Applications: | IF, IHC, WB |
| Recommended Dilution: | Immunofluorescence: 1/100 - 1/200. Immunohistochemistry on Paraffin-Embedded Sections: 1/50 - 1/100. Western Blot: 1/500 - 1/1000. |
| Reactivity: | Human |
| Host: | Rabbit |
| Clonality: | Polyclonal |
| Immunogen: | The antiserum was produced against synthesized non-phosphopeptide derived from human Keratin 8 around the phosphorylation site of serine 73 (L-L-S _p -P-L). |
| Specificity: | This antibody detects endogenous levels of total Keratin 8 protein. |
| Formulation: | PBS (without Mg ²⁺ and Ca ²⁺), pH 7.4, 150 mM NaCl, 0.02% Sodium Azide and 50% Glycerol. State: Aff - Purified State: Liquid purified Ig fraction |
| Concentration: | lot specific |
| Purification: | Affinity chromatography |
| Conjugation: | Unconjugated |
| Storage: | Store the antibody (in aliquots) at -20°C. Avoid repeated freezing and thawing. |
| Stability: | Shelf life: One year from despatch. |
| Gene Name: | keratin 8 |
| Database Link: | Entrez Gene 3856 Human P05787 |
| Background: | Cytokeratin 8 belongs to the type B (basic) subfamily of high molecular weight keratins and exists in combination with cytokeratin 18. Cytokeratin 8 is primarily found in the non squamous epithelia and is present in majority of adenocarcinomas and ductal carcinomas. It is absent in squamous cell carcinomas. Hepatocellular carcinomas are defined by the use of antibodies that recognize only cytokeratin polypeptides 8 and 18 |



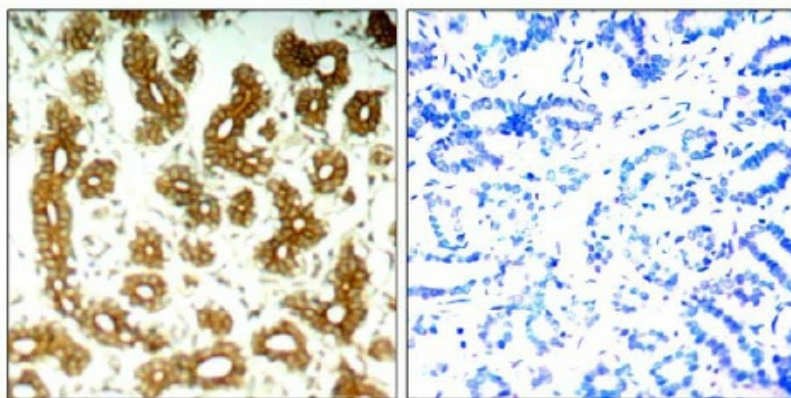
[View online »](#)

Synonyms: KRT8, CYK8, Cytokeratin-8, CK8, Keratin-8, K8, Cytokeratin endo A

Product images:

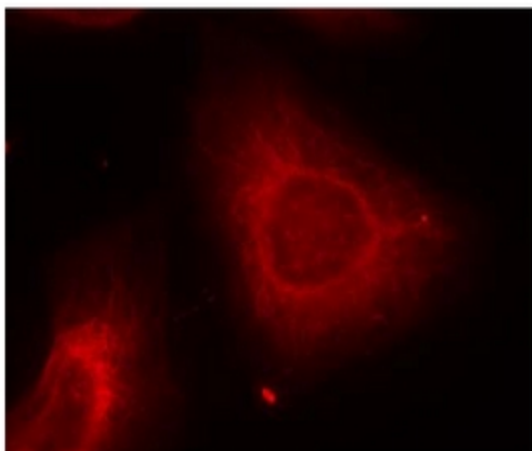


Western Blot analysis of extracts from HUVEC and 293 cells using Keratin 9 antibody



Peptide - +

Immunohistochemical analysis of paraffin-embedded human breast carcinoma tissue using Keratin 8 antibody.



Immunofluorescence staining of methanol-fixed HeLa cells using Keratin 8 antibody (Red).