

Product datasheet for **AP02789PU-N**

Cytokeratin 18 (KRT18) Rabbit Polyclonal Antibody

Product data:

Product Type:	Primary Antibodies
Applications:	IHC, WB
Recommended Dilution:	Western blot: 1/500-1/1000. Note: Incubate membrane with diluted antibody in 5% nonfat milk, 1xTBS, 0.1% Tween-20 at 4°C with gentle shaking, overnight. Immunohistochemistry on Paraffin Sections: 1/50-1/100.
Reactivity:	Human
Host:	Rabbit
Clonality:	Polyclonal
Immunogen:	Peptide Sequence around amino acids 31~35 (A-A-S-V-Y) derived from Human Keratin 18.
Specificity:	This antibody detects endogenous levels of total Keratin 18 protein.
Formulation:	PBS (without Mg ²⁺ and Ca ²⁺), pH 7.4, 150 mM NaCl, 0.02% Sodium Azide and 50% Glycerol. State: Aff - Purified State: Liquid purified IgG fraction.
Concentration:	lot specific
Purification:	Affinity-Chromatography using epitope-specific immunogen.
Conjugation:	Unconjugated
Storage:	Store the antibody (in aliquots) at -20°C. Avoid repeated freezing and thawing.
Stability:	Shelf life: One year from despatch.
Gene Name:	keratin 18
Database Link:	Entrez Gene 3875 Human P05783
Background:	Cytokeratin 18 is an acidic keratin which is found primarily in non squamous epithelia and is present in a majority of adenocarcinomas and ductal carcinomas but not in squamous cell carcinomas. Cytokeratin 18 exists in combination with Cytokeratin 8, a basic keratin. Hepatocellular carcinomas have been reportedly defined by the use of antibodies that recognize only Cytokeratins 8 and 18.



[View online »](#)

Synonyms: Cytokeratin-18, CK18, Keratin-18, Keratin 18, KRT18, CYK18, K18

Note: Molecular Weight: 46 kDa

Product images:

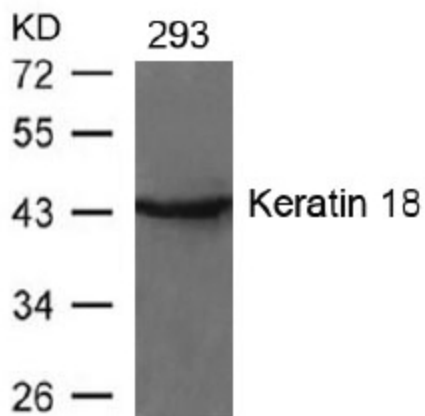
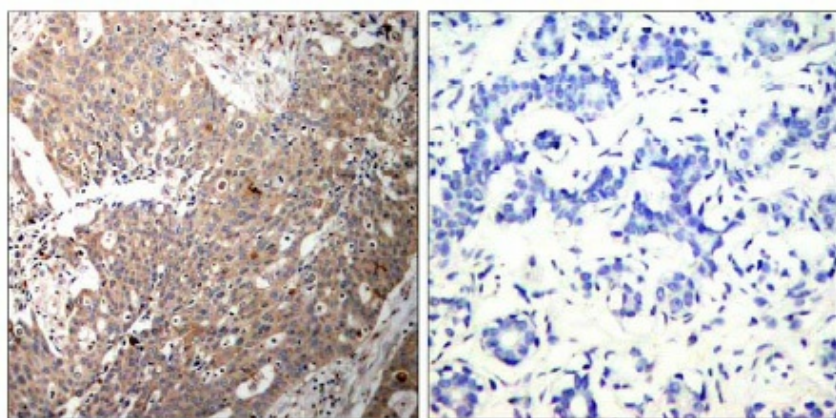


Figure 2. Western blot analysis of extracts from 293 cells using Keratin 18 antibody.



Peptide - +

Figure 1. Immunohistochemical analysis of paraffin-embedded human breast carcinoma tissue using Keratin 18 antibody (Left) or the same antibody preincubated with Blocking peptide (Right).