

Product datasheet for **AP02787PU-N**

IGF1 Receptor (IGF1R) Rabbit Polyclonal Antibody

Product data:

Product Type:	Primary Antibodies
Applications:	IHC, WB
Recommended Dilution:	Western Blot: 1/500~1/1000. Immunohistochemistry on Paraffin Sections: 1/50~1/100.
Reactivity:	Human, Mouse, Rat
Host:	Rabbit
Clonality:	Polyclonal
Immunogen:	The antiserum was produced against synthesized non-phosphopeptide derived from human IGF-1R around the phosphorylation site of Tyrosine 1280 (S-F-Yp-Y-S).
Specificity:	This antibody detects endogenous levels of total IGF-1R protein.
Formulation:	PBS (without Mg ²⁺ and Ca ²⁺), pH 7.4 containing 150mM NaCl, 0.02% Sodium Azide and 50% Glycerol. State: Aff - Purified State: Liquid purified IgG fraction.
Concentration:	lot specific
Purification:	Affinity Chromatography using epitope-specific immunogen.
Conjugation:	Unconjugated
Storage:	Store the antibody (in aliquots) at -20°C. Avoid repeated freezing and thawing.
Stability:	Shelf life: one year from despatch.
Gene Name:	insulin like growth factor 1 receptor
Database Link:	Entrez Gene 3480 Human P08069



[View online »](#)

Background:

There are two kinds of IGF receptors based on their relative affinities for IGF1 versus IGF2. The IGF1 receptor prefers IGF1 over IGF2 and weakly binds insulin. IGF1 receptor is a disulfide-linked heterotetrameric transmembrane protein consisting of two alpha (130 kD) and two beta (95 kD) subunits. Both the alpha and beta subunits are encoded within a single receptor precursor cDNA. The IGF1 receptor is therefore similar in structure to the insulin receptor. The proreceptor polypeptide is proteolytically cleaved and disulfide-linked to yield the mature heterotetrameric receptor. The IGF1 receptor is highly expressed in all cell types and tissues and is highly overexpressed in most malignant tissues where it functions as an anti-apoptotic agent by enhancing cell survival.

Synonyms:

IGF-I receptor, IGF1 Receptor

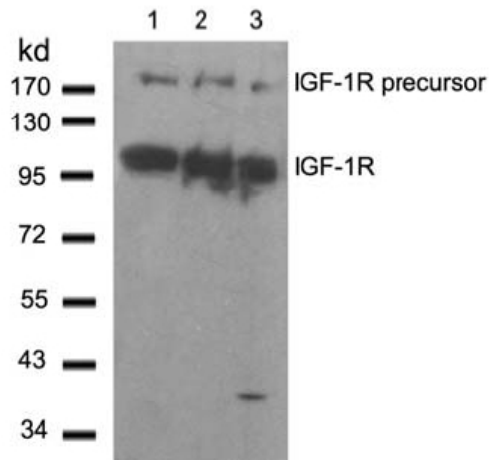
Product images:


Figure 2. Western blot analysis of extract from 293 cells (Lane 1), 3T3 cells (Lane 2) and HeLa cells (Lane 3) using IGF-1R antibody.

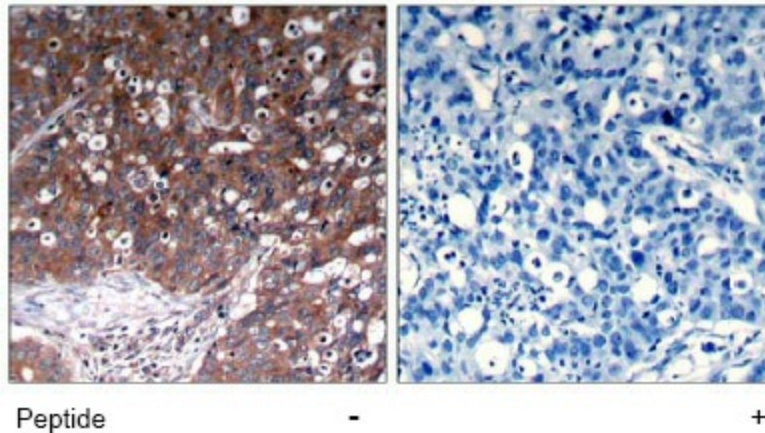


Figure 1. Immunohistochemical analysis of paraffin-embedded human breast carcinoma tissue, using IGF-1R antibody.