

Product datasheet for **AP02786PU-S**

GSK3 beta (GSK3B) Rabbit Polyclonal Antibody

Product data:

Product Type:	Primary Antibodies
Applications:	WB
Recommended Dilution:	Western Blot: 1:500~1:1000.
Reactivity:	Human, Mouse
Host:	Rabbit
Clonality:	Polyclonal
Immunogen:	The antiserum was produced against synthesized non-phosphopeptide derived from human GSK3 β around the phosphorylation site of tyrosine 216 (V-S-YP-I-C).
Specificity:	GSK3 β antibody detects endogenous levels of total GSK3 β .
Formulation:	PBS (without Mg ²⁺ and Ca ²⁺), pH 7.4 containing 150mM NaCl, 0.02% sodium azide and 50% glycerol. State: Aff - Purified State: Liquid purified IgG
Concentration:	lot specific
Purification:	The antibody was affinity-purified from rabbit antiserum by affinity-chromatography using epitope-specific immunogen.
Conjugation:	Unconjugated
Storage:	Store the antibody at -20°C. Avoid repeated freezing and thawing.
Stability:	Shelf life: one year from despatch.
Gene Name:	glycogen synthase kinase 3 beta
Database Link:	Entrez Gene 2932 Human P49841



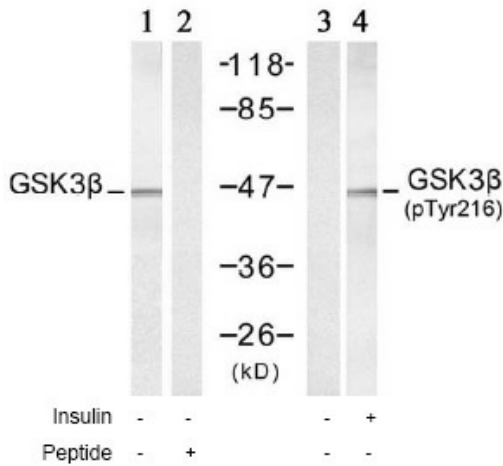
[View online »](#)

Background:

Glycogen synthase kinase 3 (GSK3) is a proline directed serine threonine kinase that was initially identified as a phosphorylating and inactivating glycogen synthase. GSK3 has been implicated in fundamental cell processes such as cell fate determination, metabolism, transcriptional control and oncogenesis. Two isoforms, alpha (GSK3A; OMIM 606784) and beta, show a high degree of amino acid homology within their catalytic domains. GSK3B is involved in energy metabolism, neuronal cell development and body pattern formation.

Synonyms:

GSK-3 beta, Glycogen synthase kinase-3 beta, GSK3B

Product images:


Western blot analysis of extract from 293 cells, untreated or treated with insulin (40 μ M, 30min), using GSK3 β Antibody (Lane 1 and 2) and GSK3 β (PTyr216) Antibody (Lane 3 and 4).