

## Product datasheet for **AP02786PU-N**

### **GSK3 beta (GSK3B) Rabbit Polyclonal Antibody**

#### **Product data:**

<b>Product Type:</b>	Primary Antibodies
<b>Applications:</b>	WB
<b>Recommended Dilution:</b>	Western Blot: 1:500~1:1000.
<b>Reactivity:</b>	Human, Mouse
<b>Host:</b>	Rabbit
<b>Clonality:</b>	Polyclonal
<b>Immunogen:</b>	The antiserum was produced against synthesized non-phosphopeptide derived from human GSK3 $\beta$ around the phosphorylation site of tyrosine 216 (V-S-YP-I-C).
<b>Specificity:</b>	GSK3 $\beta$ antibody detects endogenous levels of total GSK3 $\beta$ .
<b>Formulation:</b>	PBS (without Mg <sup>2+</sup> and Ca <sup>2+</sup> ), pH 7.4 containing 150mM NaCl, 0.02% sodium azide and 50% glycerol. State: Aff - Purified State: Liquid purified IgG
<b>Concentration:</b>	lot specific
<b>Purification:</b>	The antibody was affinity-purified from rabbit antiserum by affinity-chromatography using epitope-specific immunogen.
<b>Conjugation:</b>	Unconjugated
<b>Storage:</b>	Store the antibody at -20°C. Avoid repeated freezing and thawing.
<b>Stability:</b>	Shelf life: one year from despatch.
<b>Gene Name:</b>	glycogen synthase kinase 3 beta
<b>Database Link:</b>	<a href="#">Entrez Gene 2932 Human P49841</a>



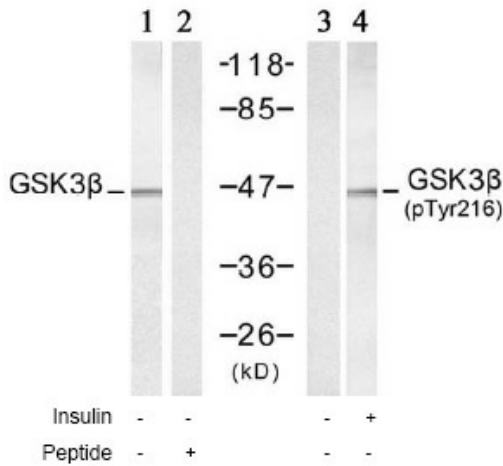
[View online »](#)

**Background:**

Glycogen synthase kinase 3 (GSK3) is a proline directed serine threonine kinase that was initially identified as a phosphorylating and inactivating glycogen synthase. GSK3 has been implicated in fundamental cell processes such as cell fate determination, metabolism, transcriptional control and oncogenesis. Two isoforms, alpha (GSK3A; OMIM 606784) and beta, show a high degree of amino acid homology within their catalytic domains. GSK3B is involved in energy metabolism, neuronal cell development and body pattern formation.

**Synonyms:**

GSK-3 beta, Glycogen synthase kinase-3 beta, GSK3B

**Product images:**


Western blot analysis of extract from 293 cells, untreated or treated with insulin (40 $\mu$ M, 30min), using GSK3 $\beta$  Antibody (Lane 1 and 2) and GSK3 $\beta$  (PTyr216) Antibody (Lane 3 and 4).