

## Product datasheet for **AP02784PU-N**

### **IKB epsilon (NFKBIE) Rabbit Polyclonal Antibody**

#### **Product data:**

<b>Product Type:</b>	Primary Antibodies
<b>Applications:</b>	IHC, WB
<b>Recommended Dilution:</b>	Western Blot: 1:500~1:1000. Immunohistochemistry: 1:50~1:100.
<b>Reactivity:</b>	Human, Mouse
<b>Host:</b>	Rabbit
<b>Clonality:</b>	Polyclonal
<b>Immunogen:</b>	The antiserum was produced against synthesized non-phosphopeptide derived from human IκB-ε around the phosphorylation site of serine 22 ( I-E-SP-L-R).
<b>Specificity:</b>	IκB-ε antibody detects endogenous levels of total IκB-ε protein.
<b>Formulation:</b>	PBS (without Mg <sup>2+</sup> and Ca <sup>2+</sup> ), pH 7.4 containing 150mM NaCl, 0.02% sodium azide and 50% glycerol. State: Aff - Purified State: Liquid purified IgG
<b>Concentration:</b>	lot specific
<b>Purification:</b>	The antibody was affinity-purified from rabbit antiserum by affinity-chromatography using epitope-specific immunogen.
<b>Conjugation:</b>	Unconjugated
<b>Storage:</b>	Store the antibody at -20°C. Avoid repeated freezing and thawing.
<b>Stability:</b>	Shelf life: one year from despatch.
<b>Gene Name:</b>	NFKB inhibitor epsilon
<b>Database Link:</b>	<a href="#">Entrez Gene 4794 Human O00221</a>



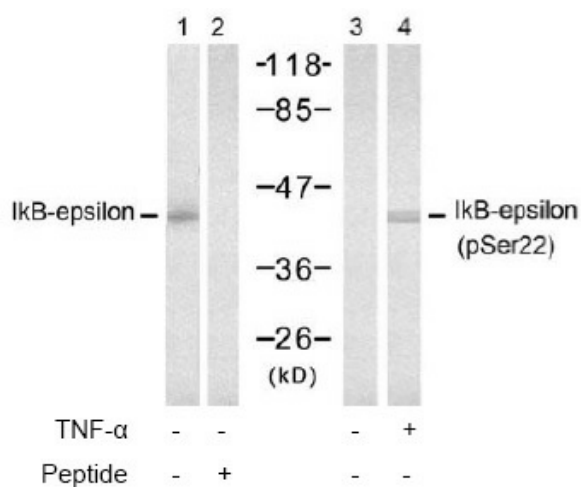
[View online »](#)

**Background:**

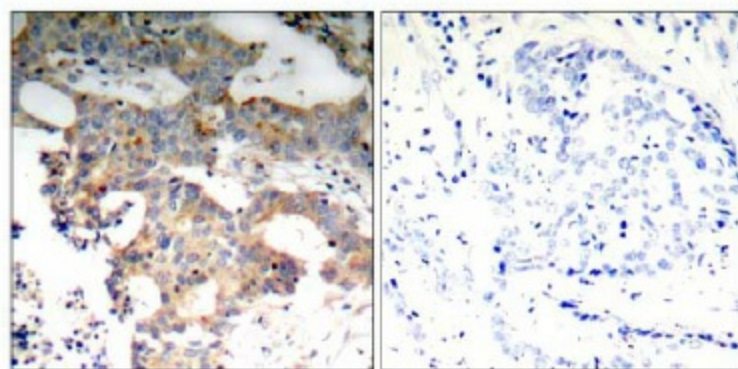
NFKB1 or NFKB2 is bound to REL, RELA, or RELB to form the NFKB complex. The NFKB complex is inhibited by I-kappa-B proteins (NFKBIA, or NFKBIB), which inactivate NF-kappa-B by trapping it in the cytoplasm. Phosphorylation of serine residues on the I-kappa-B proteins by kinases (IKBKA, or IKBKB) marks them for destruction via the ubiquitination pathway, thereby allowing activation of the NF-kappa-B complex. Activated NFKB complex translocates into the nucleus and binds DNA at kappa-B-binding motifs such as 5-prime GGGRNNYYCC 3-prime or 5-prime HGGARNYYCC 3-prime (where H is A, C, or T; R is an A or G purine; and Y is a C or T pyrimidine). For some genes, activation requires NFKB interaction with other transcription factors, such as STAT, AP1 (JUN), and NFAT.

**Synonyms:**

I-kappa-B-epsilon, IκB-E, IκB-epsilon, IκappaBepsilon

**Product images:**


Western blot analysis of extract from 293 cells, untreated or treated with TNF-α (20ng/ml, 15min), using IκB-ε antibody (Lane 1 and 2) and IκB-ε (P Ser22) antibody (Lane 3 and 4).



Immunohistochemical analysis of paraffin-embedded human breast carcinoma tissue using IκB-ε antibody.

Peptide                    -                    +