

## Product datasheet for **AP02782PU-S**

### PKC theta (PRKCQ) Rabbit Polyclonal Antibody

#### Product data:

Product Type:	Primary Antibodies
Applications:	IF, IHC, WB
Recommended Dilution:	<b>Western blot:</b> 1/500-1/1000. Incubate membrane with diluted antibody in 5% nonfat milk, 1xTBS, 0.1% Tween-20 at 4°C with gentle shaking overnight. <b>Immunofluorescence:</b> 1/100-1/200. <b>Immunohistochemistry on Paraffin Sections:</b> 1/50-1/100.
Reactivity:	Human, Mouse, Rat
Host:	Rabbit
Clonality:	Polyclonal
Immunogen:	Peptide sequence around amino acids 674~678 (R-L-S-F-A) derived from Human PKC-theta.
Specificity:	This antibody detects endogenous levels of total PKC-theta protein.
Formulation:	PBS (without Mg <sup>2+</sup> and Ca <sup>2+</sup> ), pH 7.4, 150 mM NaCl, 0.02% Sodium Azide and 50% Glycerol. State: Aff - Purified State: Liquid purified Ig fraction.
Concentration:	lot specific
Purification:	Immunoaffinity Chromatography using epitope-specific immunogen.
Conjugation:	Unconjugated
Storage:	Store the antibody (in aliquots) at -20°C. Avoid repeated freezing and thawing.
Stability:	Shelf life: One year from despatch.
Gene Name:	protein kinase C theta
Database Link:	<a href="#">Entrez Gene 5588 Human Q04759</a>



[View online »](#)

**Background:**

Protein kinase C (PKC) is a family of serine/threonine kinases that plays crucial roles in signal transduction. Members of the PKC family are divided into three groups based on their molecular structures and activating mechanisms: 1) Conventional PKC (alpha, beta, and gamma) requiring calcium, phosphatidylserine (PS), and diacylglycerol (DG) for activation; 2) novel PKC (sigma, epsilon, eta, and theta) activated independent of calcium; and 3) Atypical PKC (zeta and lamda), which are independent of both calcium and DG. High-level expression of PKC-theta was found in skeletal muscle, lung, T cells, and brain, and minimal expression in cardiac muscle, placenta, and liver. PKC theta is a autophosphorylated protein kinase.

**Synonyms:**

PKC theta, PKC-theta, nPKC-theta, Protein kinase C theta type

**Note:**

Molecular Weight: 80 kDa

**Product images:**

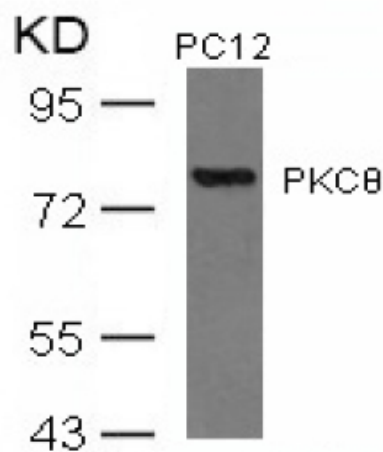


Figure 3. Western blot analysis of extracts from PC12 cells using PKC-theta antibody

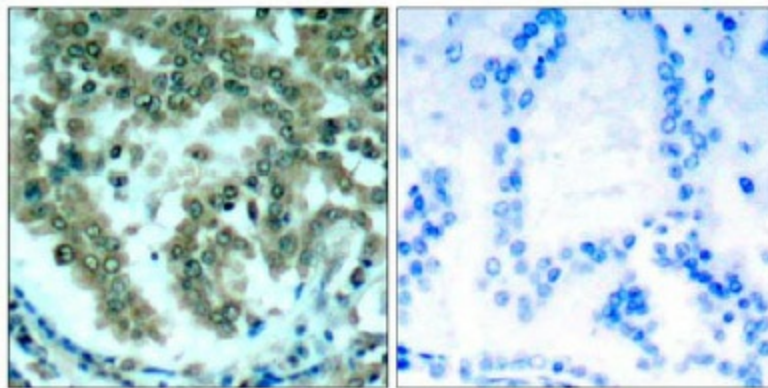


Figure 1. Immunohistochemical analysis of paraffin-embedded human lung carcinoma tissue, using PKC-theta antibody.

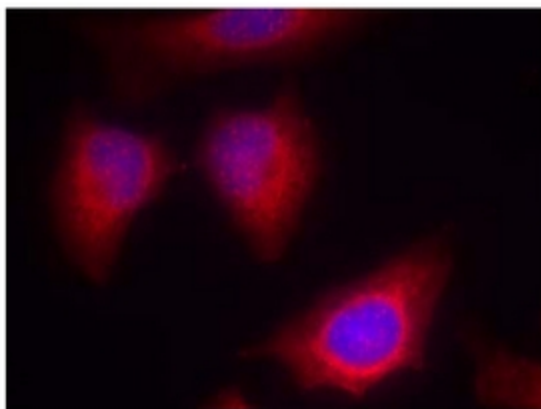


Figure 2. Immunofluorescence staining of methanol-fixed HeLa cells using PKC-theta antibody (Red).