

## Product datasheet for **AP02780PU-N**

### MEK1 (MAP2K1) Rabbit Polyclonal Antibody

#### Product data:

|                       |   |
|-----------------------|---|
| Product Type:         | Primary Antibodies  |
| Applications:         | IHC, WB   |
| Recommended Dilution: | Western Blot: 1:500~1:1000.<br>Immunohistochemistry: 1:50~1:100.  |
| Reactivity:           | Human, Mouse  |
| Host:                 | Rabbit  |
| Clonality:            | Polyclonal  |
| Immunogen:            | The antiserum was produced against synthesized non-phosphopeptide derived from human MEK1 around the phosphorylation site of threonine 291 (P-R-TP-P-G).                        |
| Specificity:          | MEK1 antibody detects endogenous levels of total MEK1 protein.  |
| Formulation:          | PBS (without Mg <sup>2+</sup> and Ca <sup>2+</sup> ), pH 7.4 containing 150mM NaCl, 0.02% sodium azide and 50% glycerol.<br>State: Aff - Purified<br>State: Liquid purified IgG |
| Concentration:        | lot specific  |
| Purification:         | The antibody was affinity-purified from rabbit antiserum by affinity-chromatography using epitope-specific immunogen.   |
| Conjugation:          | Unconjugated  |
| Storage:              | Store the antibody at -20°C.<br>Avoid repeated freezing and thawing.  |
| Stability:            | Shelf life: one year from despatch.   |
| Gene Name:            | mitogen-activated protein kinase kinase 1   |
| Database Link:        | <a href="#">Entrez Gene 5604 Human Q02750</a>   |



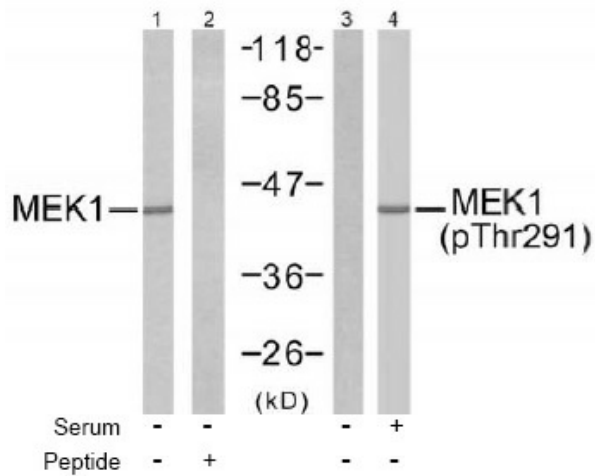
[View online »](#)

**Background:**

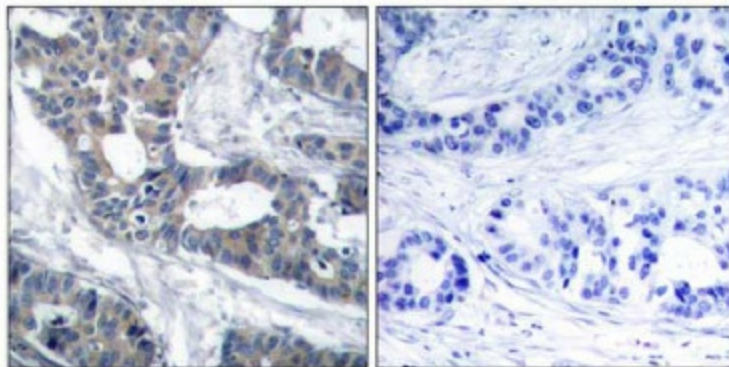
MEK1 (Mitogen activated protein kinase kinase 1) catalyzes the concomitant phosphorylation of a threonine and a tyrosine residue in a Thr-Glu-Tyr sequence located in MAP kinases. MEK1 activates ERK1 and ERK2 MAP kinases. MEK1 is activated by dual phosphorylation, which occurs on serine 218 and 222, in the activation loop of the MEK. Threonine 292 of MEK1 is phosphorylated by ERK 2, which serves as a negative feedback loop by suppressing activation of MEK1.

**Synonyms:**

MAPKK 1, ERK activator kinase 1, MAPK/ERK kinase 1, MEK1, PRKMK1, MAP kinase kinase 1

**Product images:**


Western blot analysis of extracts from 293 cells untreated or treated with 10% serum, using MEK1 antibody (Line 1 and 2) and MEK1 (pThr291) antibody (Line 3 and 4).



Immunohistochemical analysis of paraffin-embedded human breast carcinoma tissue using MEK1 antibody.

Peptide - +