

Product datasheet for **AP02775PU-N**

Bim (BCL2L11) Rabbit Polyclonal Antibody

Product data:

Product Type:	Primary Antibodies
Applications:	IHC, WB
Recommended Dilution:	Immunohistochemistry: 1/50~1/100. Western Blot: 1/500~1/1000.
Reactivity:	Human, Mouse
Host:	Rabbit
Clonality:	Polyclonal
Immunogen:	The antiserum was produced against synthesized non-phosphopeptide derived from Mouse BIM around the phosphorylation site of Serine 65 (P-A-Sp-P-G).
Specificity:	BIM antibody detects endogenous levels of total BIM protein.
Formulation:	PBS (without Mg ²⁺ and Ca ²⁺), pH 7.4 containing 150mM NaCl, 0.02% Sodium Azide and 50% Glycerol. State: Aff - Purified State: Liquid purified IgG fraction.
Concentration:	lot specific
Purification:	Affinity Chromatography using epitope-specific immunogen.
Conjugation:	Unconjugated
Storage:	Store the antibody at -20°C. Avoid repeated freezing and thawing.
Stability:	Shelf life: one year from despatch.
Gene Name:	BCL2 like 11
Database Link:	Entrez Gene 10018 Human O43521



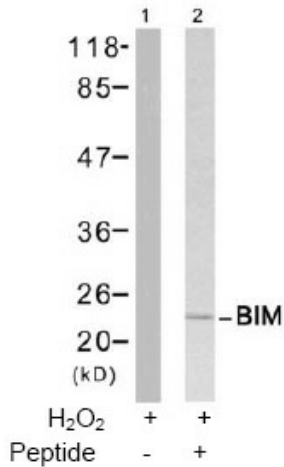
[View online »](#)

Background:

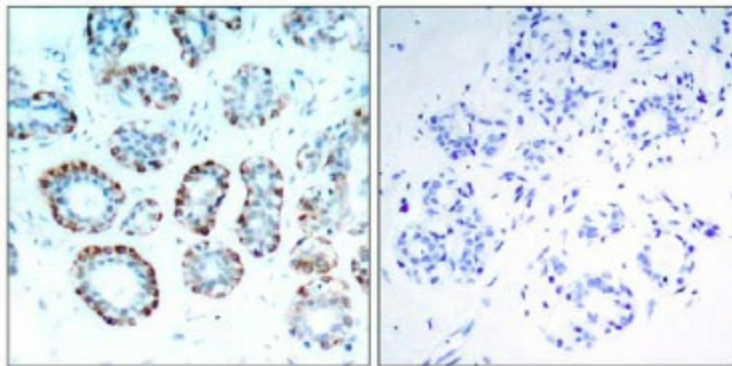
Bim, Bcl-2 interacting mediator of cell death, is a pro-apoptotic protein belonging to the Bcl2 family of proteins containing a Bcl2 homology domain 3 (BH3). It is proapoptotic and exerts its effects by interacting with prosurvival members of the Bcl2 family like Bcl2, BclxL and Bclw. Bim is sequestered in an inactive conformation through binding to the microtubule-associated dynein motor complex. Certain apoptotic stimuli release Bim from microtubules, allowing inhibitory binding to anti-apoptotic Bcl-2 family members and subsequent initiation of apoptosis.

Synonyms:

Bcl2-L-11, BCL2L11, BIM, BimEL, BimL, BimS

Product images:


Western blot analysis of extract from Jukat cells untreated or treated with H₂O₂, using BIM antibody.



Peptide - +

Immunohistochemical analysis of paraffin-embedded human breast carcinoma tissue, using BIM antibody.