

## Product datasheet for **AP02773PU-N**

### **S6K1 (RPS6KB1) Rabbit Polyclonal Antibody**

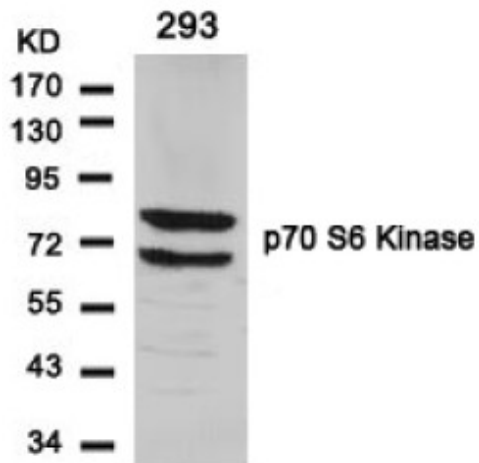
#### **Product data:**

Product Type:	Primary Antibodies
Applications:	IF, IHC, WB
Recommended Dilution:	<b>Western blot:</b> 1/500 - 1/1000. <b>Immunofluorescence:</b> 1/100 - 1/200. <b>Immunohistochemistry on Paraffin-Embedded Sections:</b> 1/50 - 1/100.
Reactivity:	Human
Host:	Rabbit
Clonality:	Polyclonal
Immunogen:	The antiserum was produced against synthesized non-phosphopeptide derived from human p70 S6 Kinase around the phosphorylation site of serine 424 (P-V-Sp-P-V).
Specificity:	This antibody detects endogenous levels of total p70 S6 Kinase protein.
Formulation:	PBS (without Mg <sup>2+</sup> and Ca <sup>2+</sup> ), pH 7.4, 150 mM NaCl, 0.02% Sodium Azide and 50% Glycerol. State: Aff - Purified State: Liquid purified IgG fraction
Concentration:	lot specific
Purification:	Affinity chromatography
Conjugation:	Unconjugated
Storage:	Store the antibody (in aliquots) at -20°C. Avoid repeated freezing and thawing.
Stability:	Shelf life: One year from despatch.
Gene Name:	ribosomal protein S6 kinase B1
Database Link:	<a href="#">Entrez Gene 6198 Human P23443</a>
Synonyms:	Ribosomal protein S6 kinase I, S6K1, p70 S6 kinase alpha, p70 S6K-alpha, p70 S6KA, Serine/threonine-protein kinase 14A

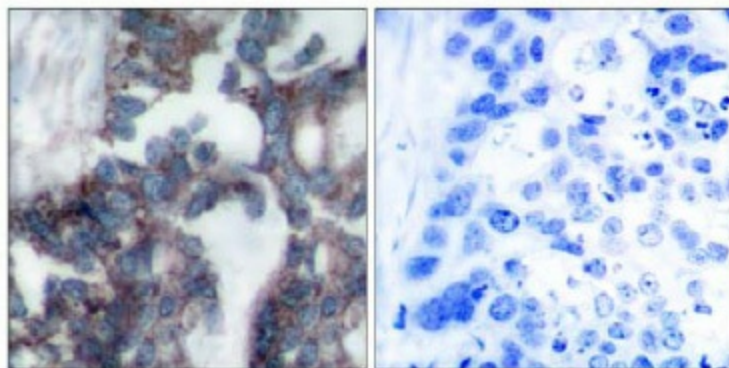


[View online »](#)

Product images:

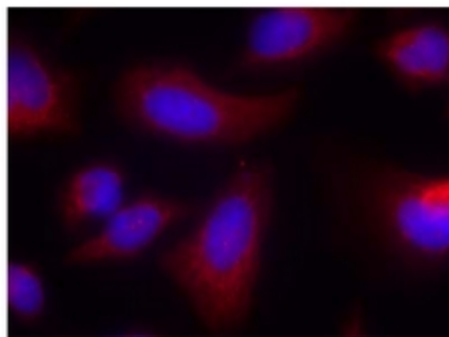


Western Blot analysis of extracts from 293 cells using p70 S6 Kinase antibody



Immunohistochemical analysis of paraffin-embedded human breast carcinoma tissue, using p70 S6 Kinase antibody.

Peptide                      -                      +



Immunofluorescence staining of methanol-fixed HeLa cells using p70 S6 Kinase antibody (Red).