

Product datasheet for **AP02772PU-S**

GAP43 Rabbit Polyclonal Antibody

Product data:

Product Type:	Primary Antibodies
Applications:	IF, IHC, WB
Recommended Dilution:	Western blot: 1/500~1/1000. Immunofluorescence: 1/100~1/200. Immunohistochemistry on Paraffin-Embedded Sections: 1/50-1/100.
Reactivity:	Human, Mouse, Rat
Host:	Rabbit
Clonality:	Polyclonal
Immunogen:	The antiserum was produced against synthesized non-phosphopeptide derived from human GAP43 around the phosphorylation site of serine 41 (Q-A-Sp-F-R).
Specificity:	This antibody detects endogenous levels of total GAP43 protein.
Formulation:	PBS (without Mg ²⁺ and Ca ²⁺), pH 7.4, 150 mM NaCl, 0.02% Sodium Azide and 50% Glycerol. State: Aff - Purified State: Liquid purified IgG fraction.
Concentration:	lot specific
Purification:	Immunoaffinity Chromatography using epitope-specific immunogen.
Conjugation:	Unconjugated
Storage:	Store the antibody (in aliquots) at -20°C. Avoid repeated freezing and thawing.
Stability:	Shelf life: One year from despatch.
Gene Name:	growth associated protein 43
Database Link:	Entrez Gene 2596 Human P17677
Background:	GAP43 is expressed by developing and regenerating neurons, and to a lesser extent, reactive glial cells. It is used widely to specifically label injured neurons and to score neuronal regeneration. GAP43 is also a neuronal growth cone protein thought to be involved in pathfinding.
Synonyms:	Neuromodulin



[View online »](#)

Product images:

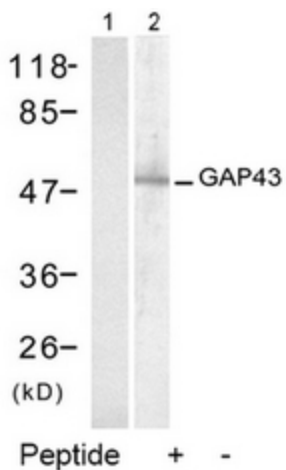


Figure 2. Western blot analysis of extract from mouse brain tissue, using GAP43 antibody (Lane 1 and 2).

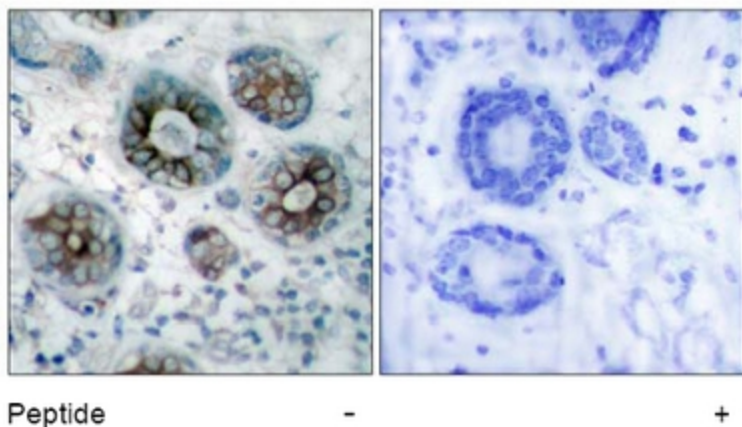


Figure 1. Immunohistochemical analysis of paraffin-embedded human breast carcinoma tissue, using GAP43 antibody.

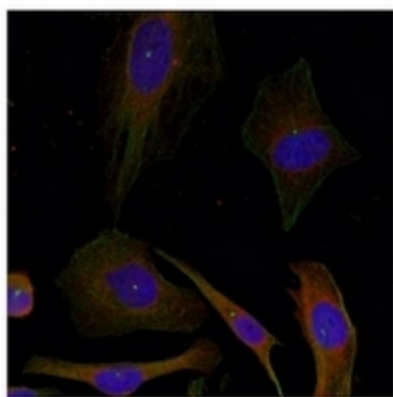


Figure 3. Immunofluorescence staining of methanol-fixed HeLa cells using GAP43 antibody (Red).