

Product datasheet for **AP02766PU-N**

CREB1 Rabbit Polyclonal Antibody

Product data:

Product Type:	Primary Antibodies
Applications:	IHC, WB
Recommended Dilution:	Western Blot: 1:500~1:1000. Immunohistochemistry: 1:50-1:100.
Reactivity:	Human, Mouse, Rat
Host:	Rabbit
Clonality:	Polyclonal
Immunogen:	The antiserum was produced against synthesized non-phosphopeptide derived from human CREB around the phosphorylation site of serine 129 (I-L-SP-R-R).
Specificity:	CREB antibody detects endogenous levels of total CREB protein.
Formulation:	PBS (without Mg ²⁺ and Ca ²⁺), pH 7.4 containing 150mM NaCl, 0.02% sodium azide and 50% glycerol State: Aff - Purified State: Liquid purified IgG
Concentration:	lot specific
Purification:	The antibody was affinity-purified from rabbit antiserum by affinity-chromatography using epitope-specific immunogen.
Conjugation:	Unconjugated
Storage:	Store the antibody at -20°C. Avoid repeated freezing and thawing.
Stability:	Shelf life: one year from despatch.
Gene Name:	cAMP responsive element binding protein 1
Database Link:	Entrez Gene 1385 Human P16220



[View online »](#)

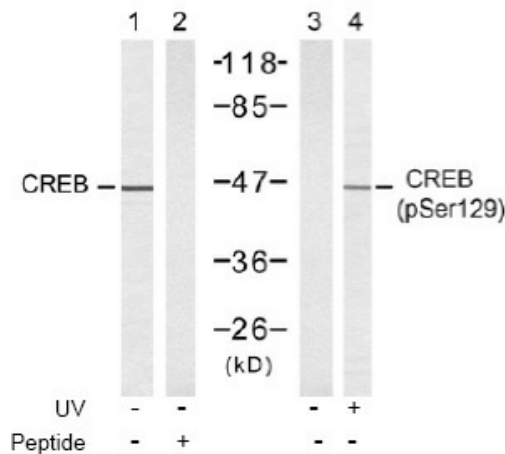
Background:

Cyclic AMP Response Element Binding protein (CREB) is a basic / leucine zipper transcription factor that binds the cyclic AMP response element (CRE) and activates transcription in response to a variety of extracellular signals including neurotransmitters, hormones, membrane depolarization, and growth and neurotrophic factors. Activation of CREB is dependent upon the phosphorylation of serine 133. Phosphorylation occurs via p44 / 42 MAP kinase and p90RSK and also via p38 MAP kinase and MSK 1. Although CREB will bind DNA independent of its phosphorylation state, only the phosphorylated form is competent as a transcription factor. CREB binding protein (CBP), a transcriptional coactivator that directly interacts with CREB, binds to CREB in the region of serine 133. CREB appears to play an important role in learning and memory. CREB knock out mice show diminished learning ability.

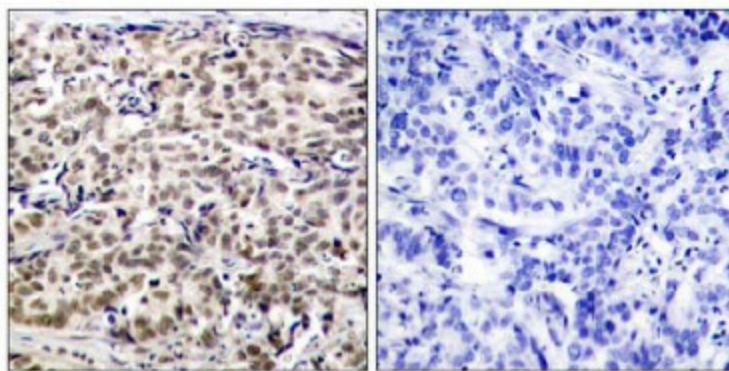
Synonyms:

CREB-1

Product images:



Western blot analysis of extracts from 293 cells untreated or treated with UV, using CREB antibody (Lane 1 and 2) and CREB (pSer129) antibody (Lane 1 and 2).



Peptide - +

Immunohistochemical analysis of paraffin-embedded human breast carcinoma tissue using CREB antibody.