

## Product datasheet for **AP02764PU-S**

### Cortactin Rabbit Polyclonal Antibody

#### Product data:

Product Type:	Primary Antibodies
Applications:	IHC
Recommended Dilution:	Immunohistochemistry: 1:50-1:100.
Reactivity:	Mouse
Host:	Rabbit
Clonality:	Polyclonal
Immunogen:	The antiserum was produced against synthesized non-phosphopeptide derived from mouse Cortactin around the phosphorylation site of tyrosine 421 (P-I-YP-E-D).
Specificity:	Cortactin antibody detects endogenous levels of total Cortactin protein.
Formulation:	PBS (without Mg <sup>2+</sup> and Ca <sup>2+</sup> ), pH 7.4 containing 150mM NaCl, 0.02% sodium azide and 50% glycerol. State: Aff - Purified State: Liquid purified IgG
Concentration:	lot specific
Purification:	The antibody was affinity-purified from rabbit antiserum by affinity-chromatography using epitope-specific immunogen.
Conjugation:	Unconjugated
Storage:	Store the antibody at -20°C. Avoid repeated freezing and thawing.
Stability:	Shelf life: one year from despatch.
Gene Name:	cortactin
Database Link:	<a href="#">Entrez Gene 13043 Mouse Q60598</a>



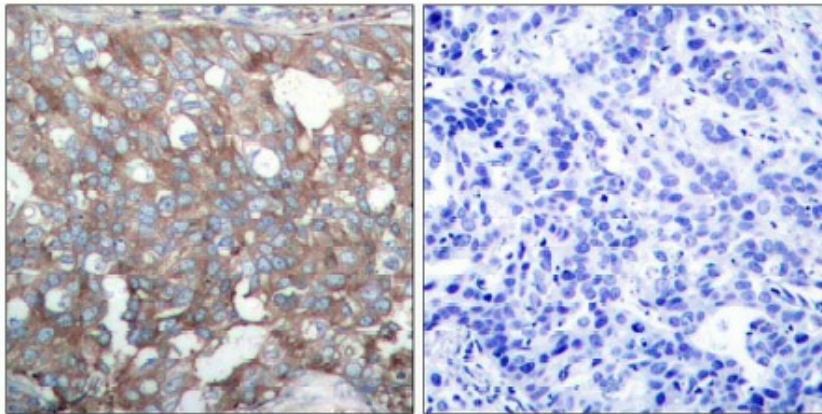
[View online »](#)

**Background:**

Cortactin is an 80/85 kDa cytoskeleton protein that facilitates assembly of cortical actin. Cortactin is widely expressed in most adherent cells and is a prominent substrate of protein tyrosine kinase Src in vivo and in vitro. The protein sequence of cortactin contains multiple amino terminal tandem repeats of a unique 37 amino acid sequence, which associates with actin, and a Src homology 3 (SH3) domain at the carboxyl terminus. Between the repeat and the SH3 domain, there is an alpha helical structure followed by a proline rich region. Between the proline rich region and the SH3 domain, there are a series of Src phosphorylation sites (Tyr421, Tyr470, and Tyr486). In vitro, cortactin binds to and cross links F actin into meshworks.

**Synonyms:**

CTTN, EMS1, Amplaxin, Oncogene EMS1

**Product images:**

Peptide

-

+

Immunohistochemical analysis of paraffin-embedded human breast carcinoma tissue, using Cortactin antibody.