

Product datasheet for **AP02760PU-S**

Synapsin I (SYN1) Rabbit Polyclonal Antibody

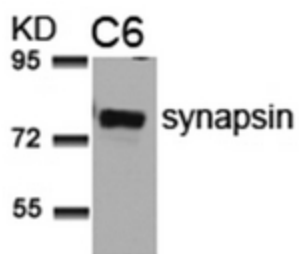
Product data:

Product Type:	Primary Antibodies
Applications:	WB
Recommended Dilution:	Western Blot: 1/500~1/1000. Incubate membrane with diluted antibody in 5% nonfat milk, 1X TBS, 0.1% Tween-20 at 4°C with gentle shaking, overnight.
Reactivity:	Human, Mouse
Host:	Rabbit
Clonality:	Polyclonal
Immunogen:	Peptide sequence around amino acids 7~11 (R-L-S-D-S) derived from Human Synapsin-1
Specificity:	This antibody detects endogenous levels of total Synapsin protein.
Formulation:	PBS (without Mg ²⁺ and Ca ²⁺), pH 7.4 containing 150mM NaCl State: Aff - Purified State: Liquid purified IgG Stabilizer: 50% Glycerol Preservative: 0.02% Sodium Azide
Concentration:	lot specific
Purification:	Affinity Chromatography using epitope-specific immunogen.
Conjugation:	Unconjugated
Storage:	Store the antibody at -20°C. Avoid repeated freezing and thawing.
Stability:	Shelf life: one year from despatch.
Predicted Protein Size:	77 kDa
Gene Name:	synapsin I
Database Link:	Entrez Gene 6853 Human P17600
Synonyms:	Synapsin I, Brain protein 4.1, SYN1



[View online »](#)

Product images:



Western blot analysis of extract from C6 cells using Synapsin antibody