

## Product datasheet for **AP02759PU-N**

### NF2 Rabbit Polyclonal Antibody

#### Product data:

Product Type:	Primary Antibodies
Applications:	IHC, WB
Recommended Dilution:	<b>Western blot:</b> 1/500-1/1000. Incubate membrane with diluted antibody in 5% nonfat milk, 1xTBS, 0.1% Tween-20 at 4°C with gentle shaking, overnight. <b>Immunohistochemistry on Paraffin-Embedded Sections:</b> 1/50-1/100.
Reactivity:	Human, Mouse, Rat
Host:	Rabbit
Clonality:	Polyclonal
Immunogen:	Peptide sequence around aa 516~520 (R-L-S-M-E) derived from Human Merlin
Specificity:	This antibody detects endogenous levels of total Merlin protein.
Formulation:	PBS (without Mg <sup>2+</sup> and Ca <sup>2+</sup> ), pH 7.4 containing 150mM NaCl, 0.02% Sodium Azide and 50% Glycerol. State: Aff - Purified State: Liquid purified IgG fraction
Concentration:	lot specific
Purification:	Affinity Chromatography using epitope-specific immunogen.
Conjugation:	Unconjugated
Storage:	Store the antibody (in aliquots) at -20°C. Avoid repeated freezing and thawing.
Stability:	Shelf life: One year from despatch.
Gene Name:	neurofibromin 2 (merlin)
Database Link:	<a href="#">Entrez Gene 4771 Human P35240</a>



[View online »](#)

**Background:**

Neurofibromin 2 (NF2) is a tumor suppressor gene encoding the protein Merlin. Merlin is closely related to the ERM (ezrin, radixin, moesin) family of proteins. The precise function of Merlin is not clear. It is thought to provide a link between the actin cytoskeleton and membrane associated proteins, playing a role in transduction of extracellular signals. It has been implicated in cell proliferation and cellular motility. Mutations in the NF2 gene cause neurofibromatosis type II, a condition characterised by the development of tumors in the central nervous system.

**Synonyms:**

Neurofibromin-2, NF2, SCH, Schwannomin, Schwannomerlin

**Note:**

Molecular Weight: 69 kDa

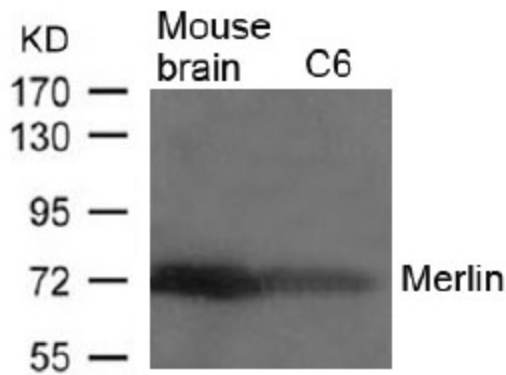
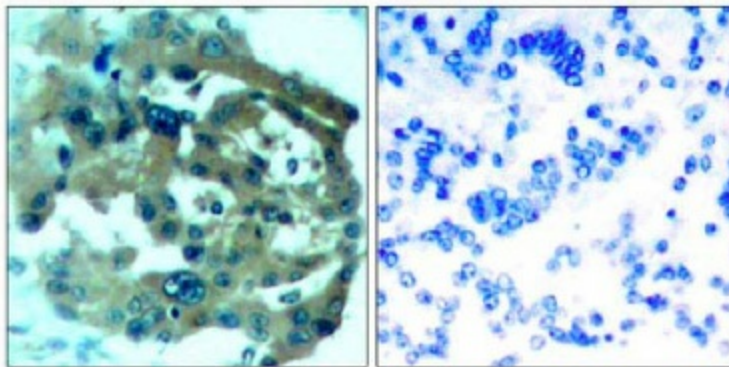
**Product images:**


Figure 2. Western blot analysis of extracts from Mouse Brain tissue and C6 cells using Merlin antibody /PU-S.



Peptide

-

+

Figure 1. Immunohistochemical analysis of paraffin-embedded human lung carcinoma tissue, using Merlin antibody /PU-S.