

## Product datasheet for **AP02755PU-S**

### GRIA1 Rabbit Polyclonal Antibody

#### Product data:

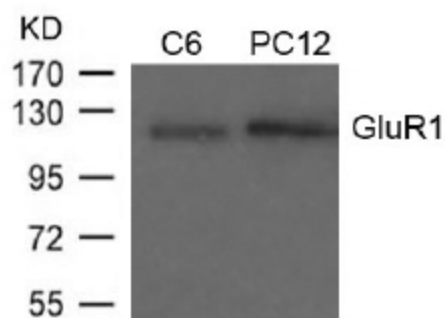
Product Type:	Primary Antibodies
Applications:	WB
Recommended Dilution:	<b>Western blot:</b> 1/500-1/1000. Note: Incubate membrane with diluted antibody in 5% nonfat milk, 1xTBS, 0.1% Tween-20 at 4°C with gentle shaking, overnight.
Reactivity:	Human, Mouse, Rat
Host:	Rabbit
Clonality:	Polyclonal
Immunogen:	Peptide Sequence around amino acids 847~851 (Q-Q-SP-I-N) derived from Human GluR1.
Specificity:	This Antibody detects endogenous levels of total GluR1 protein.
Formulation:	PBS (without Mg <sup>2+</sup> and Ca <sup>2+</sup> ), pH 7.4, 150 mM NaCl, 0.02% Sodium Azide and 50% Glycerol. State: Aff - Purified State: Liquid purified IgG fraction.
Concentration:	lot specific
Purification:	Affinity-Chromatography using epitope-specific immunogen.
Conjugation:	Unconjugated
Storage:	Store the antibody (in aliquots) at -20°C. Avoid repeated freezing and thawing.
Stability:	Shelf life: One year from despatch.
Gene Name:	glutamate ionotropic receptor AMPA type subunit 1
Database Link:	<a href="#">Entrez Gene 2890 Human P42261</a>
Background:	Glutamate receptor 1 (AMPA) belongs to the glutamate-gated ion channel and binds AMPA, glutamate and kainate. L-Glutamate is the major excitatory neurotransmitter in the mammalian CNS, acting through both ligand gated ion channels (ionotropic receptors; composed of subunits GluR1-4) and G-protein coupled (metabotropic) receptors. The AMPA glutamate receptors mediate fast synaptic transmission in the CNS.
Synonyms:	GluR-1, GRIA1, GLUH1, GluR-A, GluR-K1, Glutamate receptor ionotropic, AMPA1



[View online »](#)

Note: Molecular Weight: 110 kDa

**Product images:**



Western blot analysis of extracts from C6 and PC12 using GluR1 antibody.