

Product datasheet for **AP02752PU-N**

GJA1 Rabbit Polyclonal Antibody

Product data:

Product Type:	Primary Antibodies
Applications:	IHC, WB
Recommended Dilution:	Western Blot: 1/500-1/1000. Incubate membrane with diluted antibody in 5% nonfat milk, 1xTBS, 0.1% Tween-20 at 4°C with gentle shaking, overnight. Immunohistochemistry on Paraffin Sections: 1/50-1/100.
Reactivity:	Human, Mouse, Rat
Host:	Rabbit
Clonality:	Polyclonal
Immunogen:	Synthetic KLH conjugated Peptide sequence around amino acids 365~369 (R-A-S-S-R) from Human Connexin-43.
Specificity:	This antibody detects endogenous levels of total Connexin 43 protein.
Formulation:	PBS (without Mg ²⁺ and Ca ²⁺), pH 7.4 containing 150mM NaCl State: Aff - Purified State: Liquid purified IgG fraction Stabilizer: 50% Glycerol Preservative: 0.02% Sodium Azide
Concentration:	lot specific
Purification:	Affinity Chromatography using epitope-specific immunogen
Conjugation:	Unconjugated
Storage:	Store the antibody (in aliquots) at -20°C. Avoid repeated freezing and thawing.
Stability:	Shelf life: one year from despatch.
Gene Name:	gap junction protein alpha 1
Database Link:	Entrez Gene 2697 Human P17302



[View online »](#)

Background:

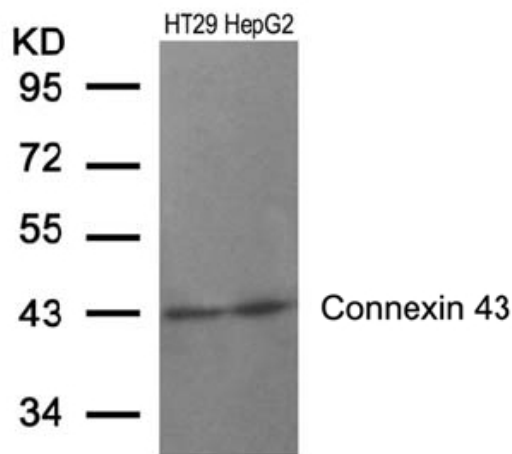
GJA1 is a member of the connexin gene family and a component of gap junctions. Gap junctions are composed of arrays of intercellular channels and provide a route for the diffusion of materials of low molecular weight from cell to cell. GJA1 is the major protein of gap junctions in the heart, and gap junctions are thought to have a crucial role in the synchronized contraction of the heart and in embryonic development. GJA1 is targeted by several protein kinases that regulate myocardial cell cell coupling. A related intronless GJA1 pseudogene, GJA1P, has been mapped to chromosome 5.

Synonyms:

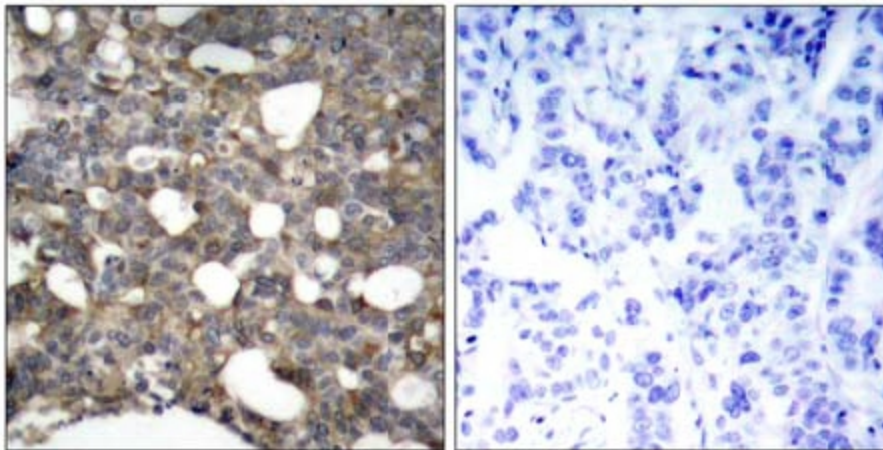
Gap junction alpha-1 protein, Connexin-43, GJAL

Note:

Molecular Weight: 43 kDa

Product images:

Western Blot analysis of extracts from HT29 and HepG2 cells using Connexin-43 antibody.



Immunohistochemistry analysis of Paraffin-Embedded Human Breast Carcinoma tissue using Connexin-43 antibody (Left) or the same antibody preincubated with blocking peptide (Right).