

Product datasheet for **AP02746PU-N**

NFKB1 Rabbit Polyclonal Antibody

Product data:

Product Type:	Primary Antibodies
Applications:	IHC, WB
Recommended Dilution:	Immunohistochemistry: 1:50~100. Western Blot: 1:500~1:1000.
Reactivity:	Human, Mouse
Host:	Rabbit
Clonality:	Polyclonal
Immunogen:	The antiserum was produced against synthesized non-phosphopeptide derived from human NFκB-p105/p50 around the phosphorylation site of serine 932 (E-T-SP-F-R).
Specificity:	NFκB-p105/p50 antibody detects endogenous levels of total NFκB-p105/p50 protein.
Formulation:	PBS(without Mg ²⁺ and Ca ²⁺), pH 7.4 containing 150mM NaCl, 0.02% sodium azide and 50% glycerol State: Aff - Purified State: Liquid purified IgG
Concentration:	lot specific
Purification:	The antibody was affinity-purified from rabbit antiserum by affinity-chromatography using epitope-specific immunogen.
Conjugation:	Unconjugated
Storage:	Store the antibody at -20°C. Avoid repeated freezing and thawing.
Stability:	Shelf life: one year from despatch.
Gene Name:	nuclear factor kappa B subunit 1
Database Link:	Entrez Gene 4790 Human P19838



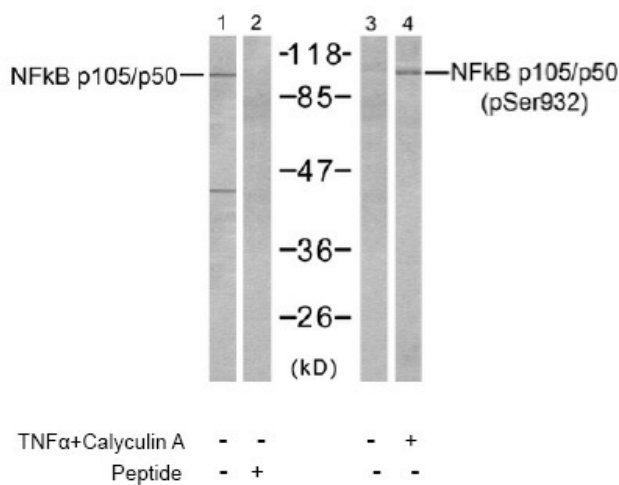
[View online »](#)

Background:

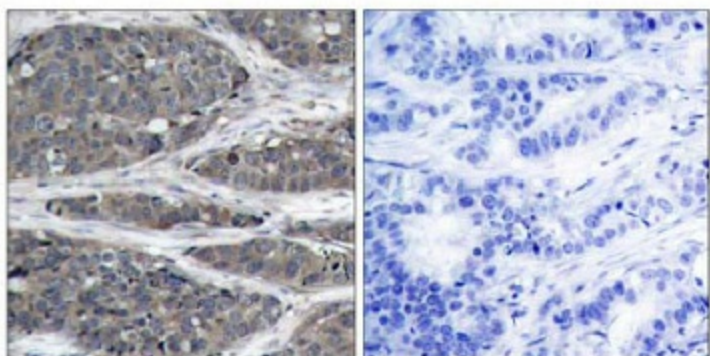
NFκB is a transcription regulator that is activated by various intra and extra cellular stimuli such as cytokines, oxidant free radicals, ultraviolet irradiation, and bacterial or viral products. NFκB is a family of transcription factors that consists of homo and heterodimers of NFκB1/p50 and RelA/p65 subunits, and controls a variety of cellular events including development and immune responses. All members share a conserved amino terminus domain that includes dimerization, nuclear localization, and DNA binding regions, and a carboxy terminal transactivation domain. Serines 529 and 536 in the transactivation domain of RelA/p65 are phosphorylated in response to several stimuli including phorbol ester, IL1 alpha and TNF alpha as mediated by IκB kinase and p38 MAPK. Serine 529 is located in a negatively charged region (amino acids 422-540) that is phosphorylated in response to phorbol myristate acetate plus calcium ionophore activation. Phosphorylation of serines 529 and 536 is critical for RelA/p65 transcriptional activity. Activated NFκB translocates into the nucleus and stimulates the expression of genes involved in a wide variety of biological functions. Inappropriate activation of NFκB has been associated with a number of inflammatory diseases while persistent inhibition of NFκB leads to inappropriate immune cell development or delayed cell growth.

Synonyms:

NFKB1, KBF1, EBP-1, EBP1, NF-kappa-B p50

Product images:


Western blot analysis of extracts from HeLa cells, untreated or treated with TNFα (20ng/ml 5min) and Calyculin A (50nM 15min), using NFκB p105/p50 antibody (Line 1 and 2) and NFκB p105/p50 (pSer932) antibody (Line 3 and 4).



Peptide

-

+

Immunohistochemical analysis of paraffin-embedded human breast carcinoma tissue using NF κ B-p105/p50 antibody.