

Product datasheet for **AP02744PU-S**

HSP27 (HSPB1) Rabbit Polyclonal Antibody

Product data:

Product Type:	Primary Antibodies
Applications:	IHC, WB
Recommended Dilution:	Western Blot: 1/500-1/1000. Immunohistochemistry on Paraffin Sections: 1/50-1/100.
Reactivity:	Human
Host:	Rabbit
Clonality:	Polyclonal
Immunogen:	Peptide sequence around amino acids 80-84 (Q-L-S-S-G) derived from Human HSP27.
Specificity:	This antibody detects endogenous levels of total HSP27 protein.
Formulation:	PBS (without Mg ²⁺ and Ca ²⁺), pH 7.4 containing 150mM NaCl State: Aff - Purified State: Liquid purified IgG fraction Stabilizer: 50% Glycerol Preservative: 0.02% Sodium Azide
Concentration:	lot specific
Purification:	Affinity Chromatography using epitope-specific immunogen
Conjugation:	Unconjugated
Storage:	Store the antibody (in aliquots) at -20°C. Avoid repeated freezing and thawing.
Stability:	Shelf life: one year from despatch.
Gene Name:	heat shock protein family B (small) member 1
Database Link:	Entrez Gene 3315 Human P04792



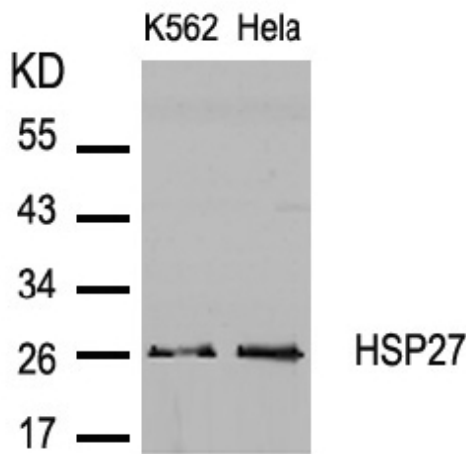
[View online »](#)

Background:

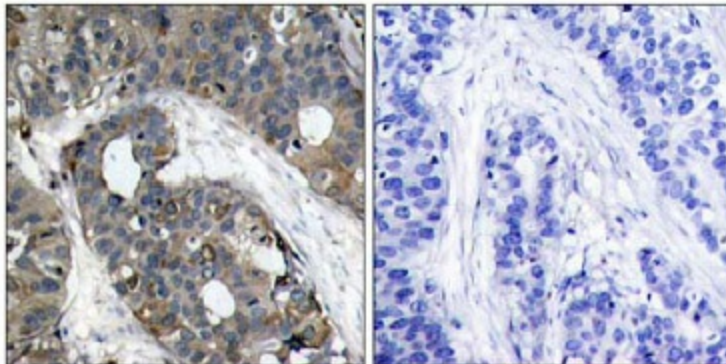
Hsp27, also referred to as the Estrogen regulated 24K protein and HSP28, is one of several small heat shock proteins (HSP) produced by all organisms studied. Hsp27 synthesis is induced by elevated temperature, as well as estrogen in hormone responsive cells. This protein is involved in stress resistance and actin organization. Interestingly, human HSP27 also shares greater than 50% homology with low molecular weight *Drosophila* HSP's and mammalian α -crystalline lens protein. Because of the estrogen responsive nature of Hsp27, this protein has been studied extensively in human estrogen responsive tissues such as cervix, endometrium and breast tissue. This work has led to the suggestion that Hsp27 may be a useful marker in classifying various hormone sensitive tumors.

Synonyms:

Heat shock protein beta-1, Heat shock 27 kDa protein, HSP28, 28 kDa heat shock protein, SRP27, HSP25

Product images:


Western blot analysis of extracts from K562 and HeLa cells using HSP27 Antibody



Peptide

-

+

Immunohistochemical analysis of paraffin-embedded human breast carcinoma tissue using HSP27 Antibody