

Product datasheet for **AP02734PU-N**

RPS6 Rabbit Polyclonal Antibody

Product data:

Product Type:	Primary Antibodies
Applications:	IF, IHC, WB
Recommended Dilution:	Western blot: 1/500-1/1000. Incubate membrane with diluted antibody in 5% nonfat milk, 1X TBS, 0,1% Tween-20 at 4°C with gentle shaking, overnight. Immunofluorescence: 1/100-1/200. Immunohistochemistry on Paraffin-Embedded Sections: 1/50-1/100.
Reactivity:	Human, Mouse, Rat
Host:	Rabbit
Clonality:	Polyclonal
Immunogen:	Peptide sequence around amino acids 233~237 (R-L-S-S-L) derived from Human S6 Ribosomal protein
Specificity:	This antibody AP02734PU detects endogenous levels of total S6 Ribosomal protein.
Formulation:	PBS (without Mg ²⁺ and Ca ²⁺), pH 7.4, 150 mM NaCl, 0.02% Sodium Azide and 50% Glycerol. State: Aff - Purified State: Liquid purified Ig fraction
Concentration:	lot specific
Purification:	Affinity Chromatography using epitope-specific peptide
Conjugation:	Unconjugated
Storage:	Store the antibody (in aliquots) at -20°C. Avoid repeated freezing and thawing.
Stability:	Shelf life: One year from despatch.
Gene Name:	ribosomal protein S6
Database Link:	Entrez Gene 6194 Human P62753



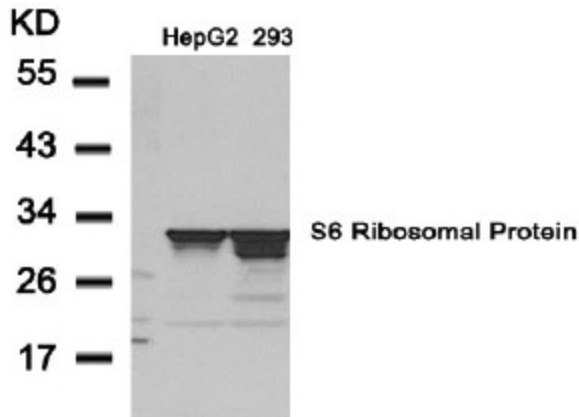
[View online »](#)

Background:

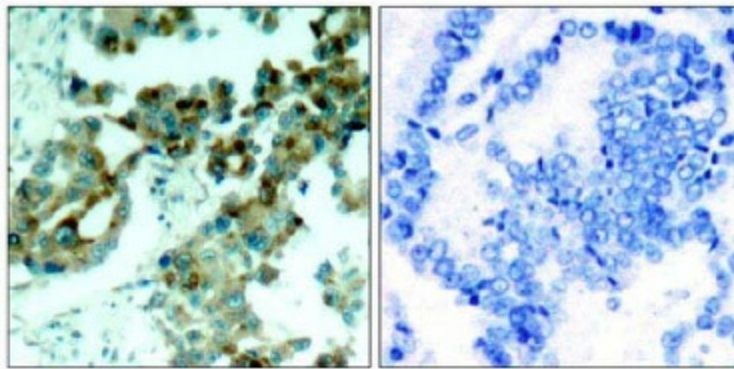
May play an important role in controlling cell growth and proliferation through the selective translation of particular classes of mRNA. Ribosomal protein S6 is the major substrate of protein kinases in eukaryote ribosomes. The phosphorylation is stimulated by growth factors, tumor promoting agents, and mitogens. It is dephosphorylated at growth arrest.

Synonyms:

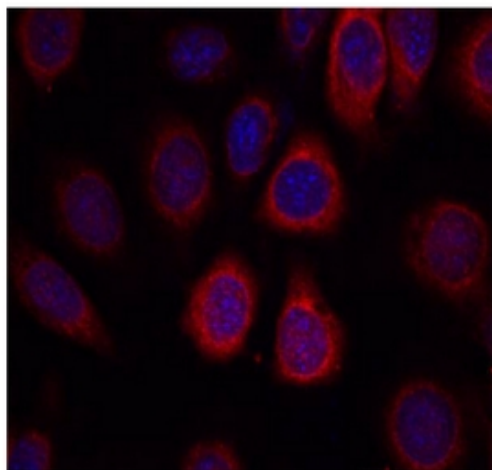
Phosphoprotein NP33, 40S ribosomal protein S6

Product images:


Western Blot analysis of extracts from HepG2 and 293 cells using S6 Ribosomal Protein antibody



Immunohistochemical analysis of paraffin-embedded human lung carcinoma tissue using S6 Ribosomal protein antibody.



Immunofluorescence staining of methanol-fixed MCF7 cells using S6 Ribosomal protein antibody (Red).