

## Product datasheet for **AP02733PU-S**

### IRS1 Rabbit Polyclonal Antibody

#### Product data:

Product Type:	Primary Antibodies
Applications:	IF, WB
Recommended Dilution:	<b>Western blot:</b> 1/500 - 1/1000. <b>Immunofluorescence:</b> 1/100 - 1/200.
Reactivity:	Human, Mouse
Host:	Rabbit
Clonality:	Polyclonal
Immunogen:	Synthetic non-phosphopeptide derived from human IRS-1 around the phosphorylation site of serine 639 (P-K-SP-V-S).
Specificity:	This antibody AP02733PU detects endogenous levels of total IRS-1 protein.
Formulation:	PBS (without Mg <sup>2+</sup> and Ca <sup>2+</sup> ), pH 7.4, 150 mM NaCl, 0.02% Sodium Azide and 50% Glycerol. State: Aff - Purified State: Liquid purified Ig fraction
Concentration:	lot specific
Purification:	Immunoaffinity Chromatography
Conjugation:	Unconjugated
Storage:	Store the antibody (in aliquots) at -20°C. Avoid repeated freezing and thawing.
Stability:	Shelf life: One year from despatch.
Gene Name:	insulin receptor substrate 1
Database Link:	<a href="#">Entrez Gene 3667 Human P35568</a>



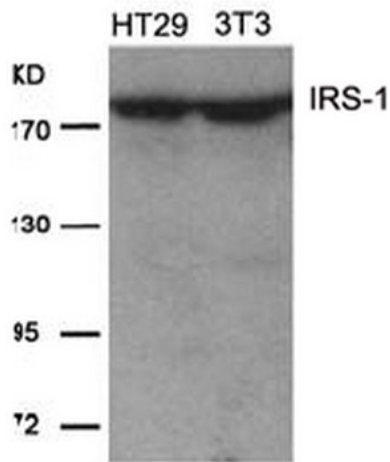
[View online »](#)

**Background:**

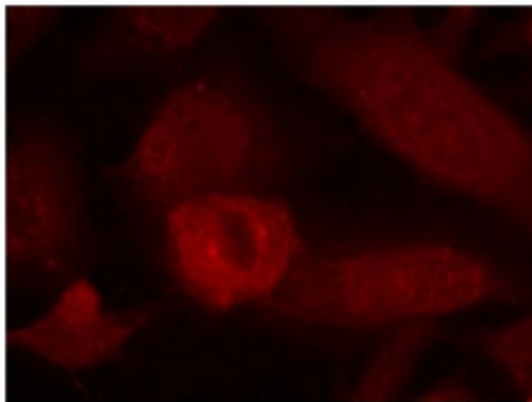
Insulin receptor substrates (IRS) are responsible for several insulin related activities, such as glucose homeostasis, cell growth, cell transformation, apoptosis and insulin signal transduction. Serine/threonine phosphorylation of IRS1 has been demonstrated to be a negative regulator of insulin signaling and is responsible for its degradation, although IRS1 degradation pathways are not well understood. IRS1 has also been shown to be constitutively activated in cancers such as breast cancer, Wilm's tumors, and adrenal cortical carcinomas, thus making IRS1 phosphorylation and subsequent degradation an attractive therapeutic target. To date there have been four subtypes identified: IRS1, 2, 3 and 4, with IRS1 being widely expressed.

**Synonyms:**

Insulin receptor substrate 1, IRS-1

**Product images:**

Western Blot analysis of extracts from HT29 and 3T3 cells using IRS-1 antibody



Immunofluorescence staining of methanol-fixed HeLa cells using IRS-1 antibody (Red).