

Product datasheet for **AP02730PU-N**

EGFR Rabbit Polyclonal Antibody

Product data:

Product Type:	Primary Antibodies
Applications:	WB
Recommended Dilution:	Western Blot: 1:500~1:1000.
Reactivity:	Human, Mouse
Host:	Rabbit
Clonality:	Polyclonal
Immunogen:	The antiserum was produced against synthesized non-phosphopeptide derived from human EGFR around the phosphorylation site of tyrosine 1197 (A-E-YP-L-R).
Specificity:	EGFR antibody detects endogenous levels of total EGFR protein.
Formulation:	PBS (without Mg ²⁺ and Ca ²⁺), pH 7.4 containing 150mM NaCl, 0.02% sodium azide and 50% glycerol. State: Aff - Purified State: Liquid purified IgG
Concentration:	lot specific
Purification:	The antibody was affinity-purified from rabbit antiserum by affinity-chromatography using epitope-specific immunogen.
Conjugation:	Unconjugated
Storage:	Store the antibody at -20°C. Avoid repeated freezing and thawing.
Stability:	Shelf life: one year from despatch.
Gene Name:	epidermal growth factor receptor
Database Link:	Entrez Gene 1956 Human P00533



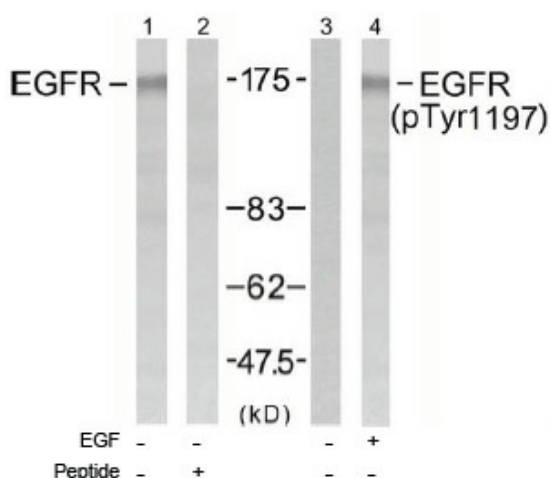
[View online »](#)

Background:

Protein kinases are enzymes that transfer a phosphate group from a phosphate donor onto an acceptor amino acid in a substrate protein. By this basic mechanism, protein kinases mediate most of the signal transduction in eukaryotic cells, regulating cellular metabolism, transcription, cell cycle progression, cytoskeletal rearrangement and cell movement, apoptosis, and differentiation. The protein kinase family is one of the largest families of proteins in eukaryotes, classified in 8 major groups based on sequence comparison of their tyrosine (PTK) or serine/threonine (STK) kinase catalytic domains. Epidermal Growth factor receptor (EGFR) is the prototype member of the type 1 receptor tyrosine kinases. EGFR overexpression in tumors indicates poor prognosis and is observed in tumors of the head and neck, brain, bladder, stomach, breast, lung, endometrium, cervix, vulva, ovary, esophagus, stomach and in squamous cell carcinoma.

Synonyms:

Epidermal growth factor receptor, EGF Receptor, erbB-1, c-ErbB-1

Product images:


Western blot analysis of extract from A431 cells untreated or treated with EGF (200ng/ml, 5min), using EGFR antibody (Lane 1 and 2) and EGFR (pTyr1197) antibody (Lane 3 and 4).