

## Product datasheet for **AP02728PU-N**

### PDGF Receptor beta (PDGFRB) Rabbit Polyclonal Antibody

#### Product data:

Product Type:	Primary Antibodies
Applications:	WB
Recommended Dilution:	Western Blot: 1:500~1:1000.
Reactivity:	Human, Rat
Host:	Rabbit
Clonality:	Polyclonal
Immunogen:	The antiserum was produced against synthesized non-phosphopeptide derived from human PDGF Receptor $\beta$ around the phosphorylation site of tyrosine 751(V-D-YP-V-P).
Specificity:	PDGF Receptor $\beta$ antibody detects endogenous levels of total PDGF Receptor $\beta$ protein.
Formulation:	PBS (without Mg <sup>2+</sup> and Ca <sup>2+</sup> ), pH 7.4 containing 150mM NaCl, 0.02% sodium azide and 50% glycerol. State: Aff - Purified State: Liquid purified IgG
Concentration:	lot specific
Purification:	The antibody was affinity-purified from rabbit antiserum by affinity-chromatography using epitope-specific immunogen.
Conjugation:	Unconjugated
Storage:	Store the antibody at -20°C. Avoid repeated freezing and thawing.
Stability:	Shelf life: one year from despatch.
Gene Name:	platelet derived growth factor receptor beta
Database Link:	<a href="#">Entrez Gene 5159 Human P09619</a>



[View online »](#)

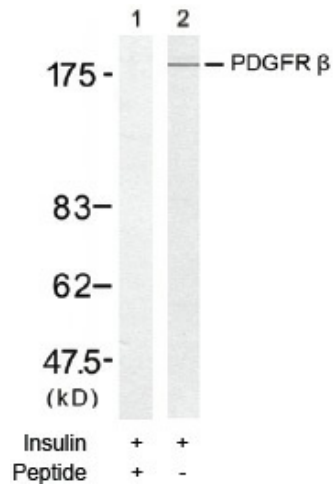
**Background:**

Platelet-derived growth factor receptors exhibit tyrosine-protein kinase activity and have been implicated in the control of cell proliferation, survival and migration. PDGF receptors, PDGFR-alpha and PDGFR-beta, have 5 extracellular immunoglobulin-like domains and an intracellular tyrosine kinase domain. Upon binding a PDGF, the receptors form homo- and heterodimers. Dimerization of the receptors results in phosphorylation in the complex. More than 10 different SH2-domain-containing molecules have been shown to bind to different autophosphorylation sites in the PDGF-alpha and beta receptors. PDGF alpha receptors are expressed in oligodendrocyte progenitor cells and PDGF beta receptors are expressed on neurons.

**Synonyms:**

PDGF-R-beta, PDGF Receptor beta

**Product images:**



Western blot analysis of extract from 293 cells, using PDGF Receptor  $\beta$  antibody.