

Product datasheet for **AP02727PU-N**

Stathmin 1 (STMN1) Rabbit Polyclonal Antibody

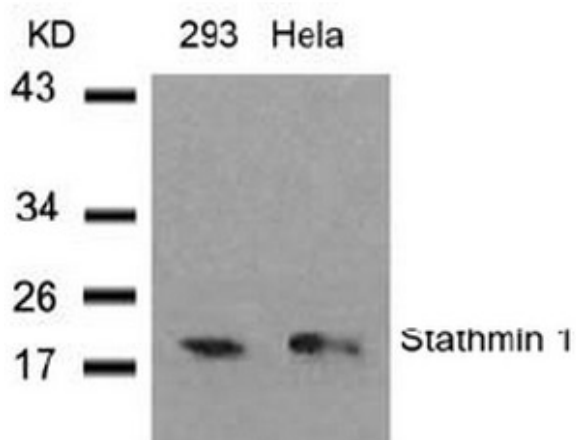
Product data:

Product Type:	Primary Antibodies
Applications:	IF, IHC, WB
Recommended Dilution:	Western blot: 1/500-1/1000. Immunofluorescence: 1/100-1/200. Immunohistochemistry on Paraffin-Embedded Sections: 1/50-1/100.
Reactivity:	Human, Mouse, Rat
Host:	Rabbit
Clonality:	Polyclonal
Immunogen:	The antiserum was produced against synthesized non-phosphopeptide derived from Human Stathmin 1 around the phosphorylation site of serine 37 (P-L-SP-P-P).
Specificity:	This antibody AP02727PU detects endogenous levels of total Stathmin 1 protein.
Formulation:	PBS (without Mg ²⁺ and Ca ²⁺), pH 7.4, 150 mM NaCl, 0.02% Sodium Azide and 50% Glycerol. State: Aff - Purified State: Liquid purified Ig fraction.
Concentration:	lot specific
Purification:	Immunoaffinity Chromatography using epitope-specific immunogen.
Conjugation:	Unconjugated
Storage:	Store the antibody at -20°C. Avoid repeated freezing and thawing.
Stability:	Shelf life: one year from despatch.
Gene Name:	stathmin 1
Database Link:	Entrez Gene 3925 Human P16949
Synonyms:	LAP18, OP18, Phosphoprotein p19, pp19, Leukemia-associated phosphoprotein p18, Oncoprotein 18, Op18, pp17, Prosolin, Metablastin, Protein Pr22

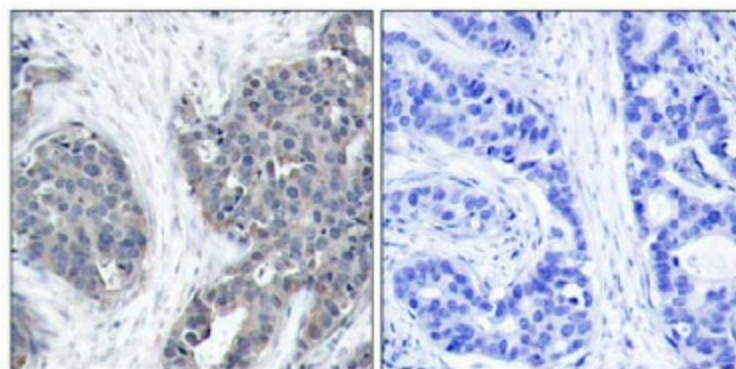


[View online »](#)

Product images:

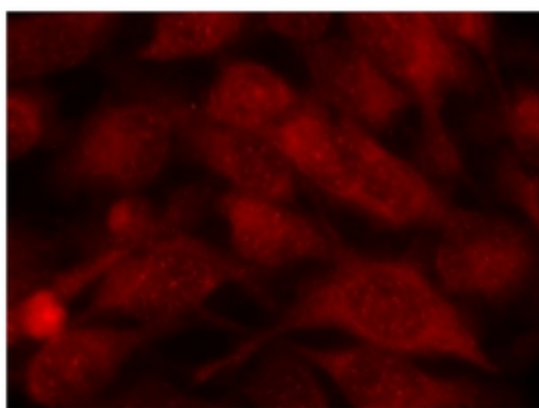


Western Blot analysis of extracts from 293 and HeLa cells using Stathmin 1 antibody



Immunohistochemical analysis of paraffin-embedded human breast carcinoma tissue using Stathmin-1 antibody.

Peptide - +



Immunofluorescence staining of methanol-fixed HeLa cells using Stathmin-1 antibody (Red).