

Product datasheet for **AP02725PU-S**

EIF4EBP1 Rabbit Polyclonal Antibody

Product data:

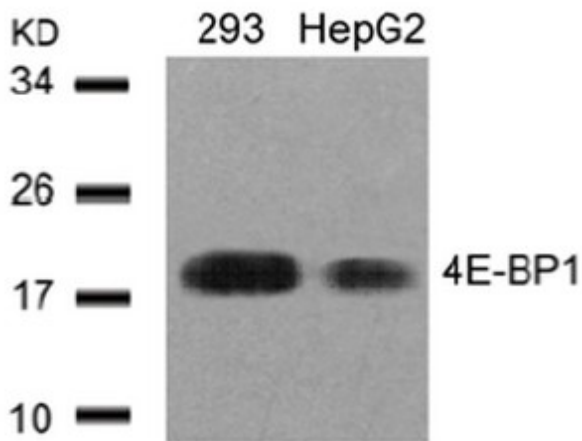
Product Type:	Primary Antibodies
Applications:	IF, IHC, WB
Recommended Dilution:	Western blot: 1/500-1/1000. Immunofluorescence: 1/100-1/200. Immunohistochemistry on Paraffin-Embedded Sections: 1/50-1/100.
Reactivity:	Human, Mouse, Rat
Host:	Rabbit
Clonality:	Polyclonal
Immunogen:	Peptide sequence around amino acids 43~47 (S-T-T-P-G) from Human 4E-BP1
Specificity:	AP02725PU detects endogenous levels of total 4E-BP1 protein. This antibody may cross-react with 4E-BP2 and 4E-BP3.
Formulation:	PBS (without Mg ²⁺ and Ca ²⁺), pH 7.4, 150 mM NaCl, 0.02% Sodium Azide and 50% Glycerol. State: Aff - Purified State: Liquid purified Ig fraction.
Concentration:	lot specific
Purification:	Immunoaffinity Chromatography using epitope-specific immunogen.
Conjugation:	Unconjugated
Storage:	Store the antibody (in aliquots) at -20°C. Avoid repeated freezing and thawing.
Stability:	Shelf life: One year from despatch.
Gene Name:	eukaryotic translation initiation factor 4E binding protein 1
Database Link:	Entrez Gene 1978 Human Q13541
Background:	eIF4EBP1 (eukaryotic translation Initiation Factor 4E Binding Protein 1) recognizes and binds the 7-methylguanosine-containing mRNA cap during an early step in the initiation of protein synthesis and facilitates ribosome binding by inducing the unwinding of mRNA secondary structures.
Synonyms:	PHAS-I, PHAS-1, PHAS1



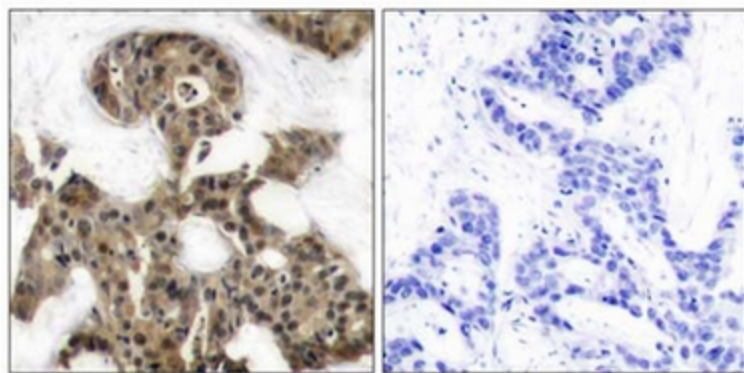
[View online »](#)

Note: Molecular Weight: 18 kDa

Product images:

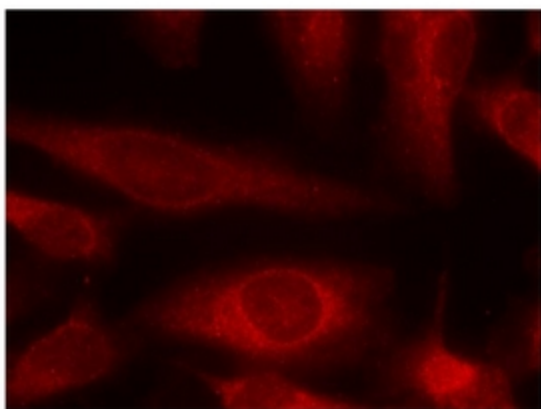


Western Blot analysis of extracts from 293 and HepG2 cells using 4E-BP1 antibody



Immunohistochemical analysis of paraffin-embedded human breast carcinoma tissue using 4E-BP1 antibody.

Peptide - +



Immunofluorescence staining of methanol-fixed HeLa cells using 4E-BP1 antibody (Red).