

## Product datasheet for **AP02721PU-S**

### beta Catenin (CTNNB1) Rabbit Polyclonal Antibody

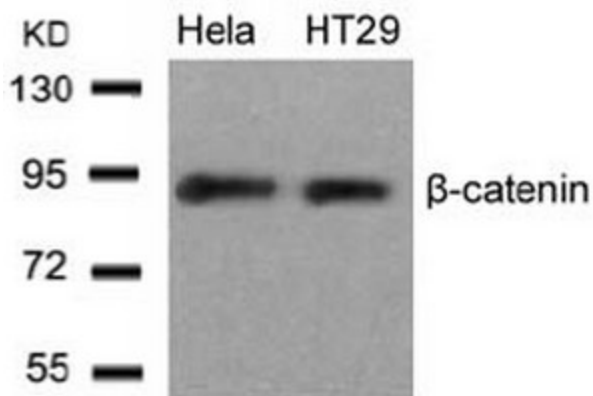
#### Product data:

Product Type:	Primary Antibodies
Applications:	IF, IHC, WB
Recommended Dilution:	Western blot: 1/500-1/1000. Immunofluorescence: 1/100-1/200. Immunohistochemistry on Paraffin-Embedded Sections: 1/50-1/100.
Reactivity:	Human, Mouse, Rat
Host:	Rabbit
Clonality:	Polyclonal
Immunogen:	The antiserum was produced against synthesized non-phosphopeptide derived from Human beta-Catenin around the phosphorylation site of serine 33 (L-D-SP-G-I).
Specificity:	This antibody AP02721PU detects endogenous levels of total beta-Catenin protein.
Formulation:	PBS (without Mg <sup>2+</sup> and Ca <sup>2+</sup> ), pH 7.4, 150 mM NaCl, 0.02% Sodium Azide and 50% Glycerol. State: Aff - Purified State: Liquid purified Ig fraction.
Concentration:	lot specific
Purification:	Immunoaffinity Chromatography using epitope-specific immunogen.
Conjugation:	Unconjugated
Storage:	Store the antibody (in aliquots) at -20°C. Avoid repeated freezing and thawing.
Stability:	Shelf life: One year from despatch.
Gene Name:	catenin beta 1
Database Link:	<a href="#">Entrez Gene 1499 Human P35222</a>
Synonyms:	CTNNB1, CTNNB, Beta-catenin

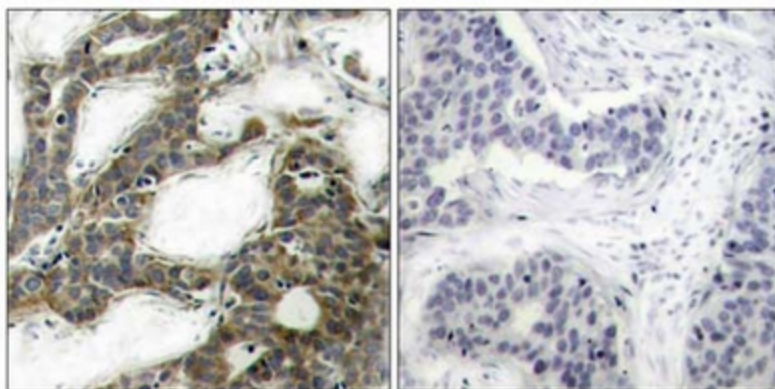


[View online »](#)

Product images:

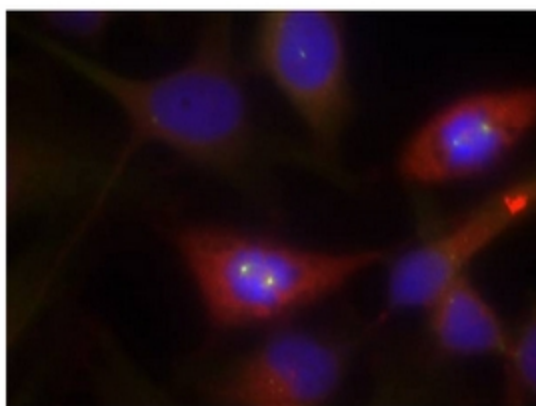


Western Blot analysis of extracts from HeLa cells using beta-Catenin antibody



Immunohistochemical analysis of paraffin-embedded human breast carcinoma tissue, using beta-Catenin antibody.

Peptide                      -                      +



Immunofluorescence staining of methanol-fixed HeLa cells using beta-Catenin antibody (Red).