

Product datasheet for **AP02714PU-S**

MEK1 (MAP2K1) Rabbit Polyclonal Antibody

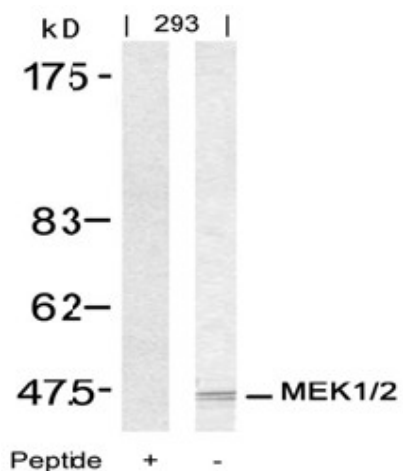
Product data:

Product Type:	Primary Antibodies
Applications:	IF, IHC, WB
Recommended Dilution:	Western blot: 1/500-1/1000. Immunofluorescence: 1/100-1/200. Immunohistochemistry on Paraffin Sections: 1/50-1/100.
Reactivity:	Human, Mouse, Rat
Host:	Rabbit
Clonality:	Polyclonal
Immunogen:	The antiserum was produced against synthesized non-phosphopeptide derived from Human MEK1 around the phosphorylation site of Serine 217 (I-D-SP-M-A).
Specificity:	This antibody AP02714PU detects endogenous levels of total MEK1/MEK2 protein.
Formulation:	PBS (without Mg ²⁺ and Ca ²⁺), pH 7.4, 150 mM NaCl, 0.02% Sodium Azide and 50% Glycerol. State: Aff - Purified State: Liquid purified Ig fraction.
Concentration:	lot specific
Purification:	Immunoaffinity Chromatography using epitope-specific immunogen.
Conjugation:	Unconjugated
Storage:	Store the antibody (in aliquots) at -20°C. Avoid repeated freezing and thawing.
Stability:	Shelf life: One year from despatch.
Gene Name:	mitogen-activated protein kinase kinase 1
Database Link:	Entrez Gene 5604 Human Q02750
Synonyms:	MAPKK1, ERK activator kinase 1, ERK activator kinase 2, MAPK/ERK kinase 1, MAPK/ERK kinase 2, MEK1, MEK2, PRKMK1, PRKMK2, MAP kinase kinase 1, MAP kinase kinase 2

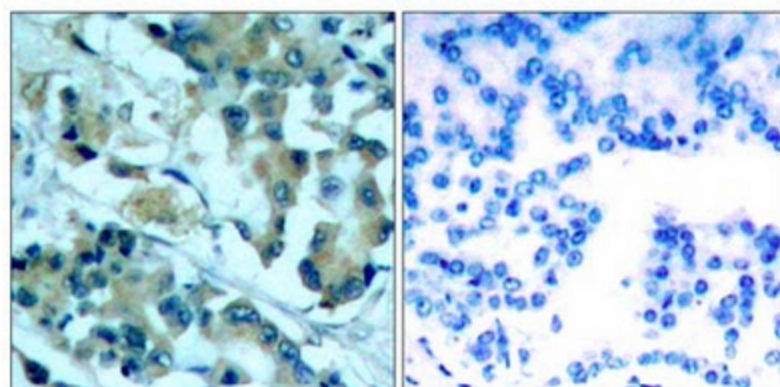


[View online »](#)

Product images:

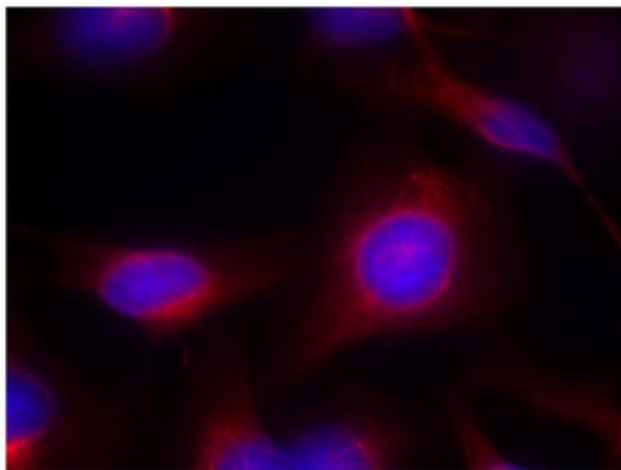


Western Blot analysis of extracts from 293 cells using MEK1/MEK2 antibody and the same antibody preincubated with blocking peptide



Peptide - +

Immunohistochemical analysis of paraffin-embedded human lung carcinoma tissue, using MEK1/MEK2 Antibody.



Immunofluorescence staining of methanol-fixed HeLa cells using MEK1/MEK2 Antibody (Red).