

## Product datasheet for **AP02713PU-N**

### **RAC1 Rabbit Polyclonal Antibody**

#### **Product data:**

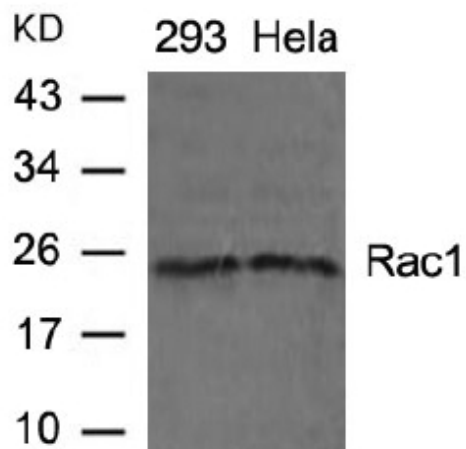
Product Type:	Primary Antibodies
Applications:	IF, WB
Recommended Dilution:	<b>Western blot:</b> 1/500-1/1000. Incubate membrane with diluted antibody in 5% nonfat milk, 1xTBS, 0.1% Tween-20 at 4°C with gentle shaking overnight. <b>Immunofluorescence:</b> 1/100-1/200.
Reactivity:	Human, Mouse, Rat
Host:	Rabbit
Clonality:	Polyclonal
Immunogen:	Peptide sequence around amino acids 69~73 (P-L-S-Y-P) derived from Human Rac1 .
Specificity:	This antibody detects endogenous levels of total Rac1 protein.
Formulation:	PBS (without Mg <sup>2+</sup> and Ca <sup>2+</sup> ), pH 7.4, 150 mM NaCl, 0.02% Sodium Azide and 50% Glycerol. State: Aff - Purified State: Liquid purified Ig fraction.
Concentration:	lot specific
Purification:	Immunoaffinity Chromatography using epitope-specific immunogen.
Conjugation:	Unconjugated
Storage:	Store the antibody (in aliquots) at -20°C. Avoid repeated freezing and thawing.
Stability:	Shelf life: One year from despatch.
Gene Name:	ras-related C3 botulinum toxin substrate 1 (rho family, small GTP binding protein Rac1)
Database Link:	<a href="#">Entrez Gene 5879 Human P63000</a>
Background:	Ras related C3 botulinum toxin substrate 1 (RAC1) protein is a GTPase which belongs to the RAS superfamily of small GTP binding proteins. Members of this superfamily appear to regulate a diverse array of cellular events, including the control of cell growth, cytoskeletal reorganization, and the activation of protein kinases.
Synonyms:	p21-Rac1, Ras-like protein TC25, MIG5



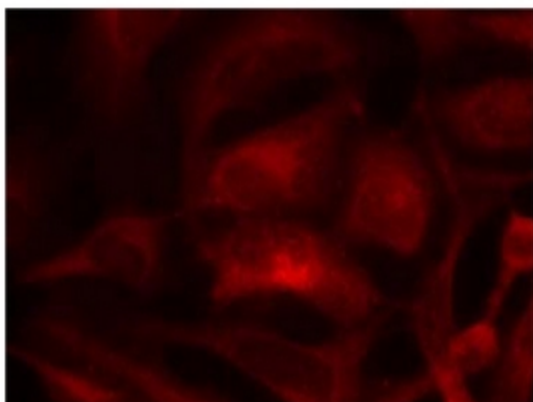
[View online »](#)

Note: Molecular Weight: 21 kDa

**Product images:**



Western blot analysis of extracts from 293 and HeLa cells using RAC1 antibody.



Immunofluorescence staining of methanol-fixed HeLa cells using RAC1 antibody.