

Product datasheet for **AP02711PU-S**

Paxillin (PXN) Rabbit Polyclonal Antibody

Product data:

Product Type:	Primary Antibodies
Applications:	IHC, WB
Recommended Dilution:	Suitable for use in in Western blot (1:500-1:1000) and Immunohistochemistry (1:50-1:100).
Reactivity:	Human
Host:	Rabbit
Clonality:	Polyclonal
Immunogen:	The antiserum was produced against synthesized non-phosphopeptide derived from human Paxillin around the phosphorylation site of tyrosine 31(T-P-Y _p -S-Y).
Specificity:	The antibody was affinity-purified from rabbit antiserum by affinity-chromatography using epitope-specific immunogen. Paxillin antibody AP02711PU detects endogenous levels of total Paxillin protein.
Formulation:	PBS (without Mg ²⁺ and Ca ²⁺), pH 7.4, 150 mM NaCl, 0.02% Sodium Azide and 50% Glycerol. State: Aff - Purified State: Liquid purified Ig fraction.
Concentration:	lot specific
Purification:	Immunoaffinity chromatography.
Conjugation:	Unconjugated
Storage:	Store the antibody (in aliquots) at -20°C. Avoid repeated freezing and thawing.
Stability:	Shelf life: One year from despatch.
Gene Name:	paxillin
Database Link:	Entrez Gene 5829 Human P49023



[View online »](#)

Background:

Paxillin is a 64 kDa cytoskeletal adapter protein involved in organisation and function of focal adhesions, which are critical to cell adhesion and migration. This in turn plays a role in a wide variety of processes including embryogenesis, organogenesis, wound repair, inflammation and cancer. Paxillin contains LD motifs, LIM domains, SH3 and SH2 binding domains that serve as docking sites for cytoskeletal proteins, tyrosine kinases (e.g., FAK, Pyk 2, Src), serine/threonine kinases, GTPase activating proteins and other adaptor proteins (e.g., Actin, Vinculin, Crk).

Synonyms:

FLJ16691

Product images:

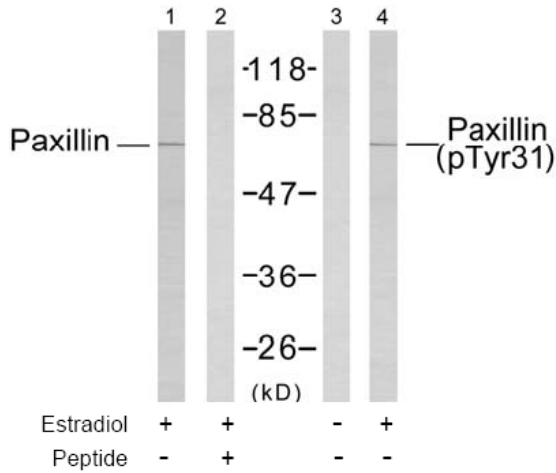
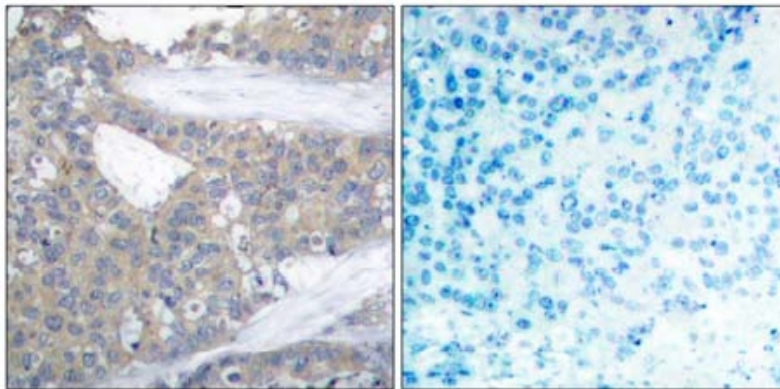


Figure 2. Western blot analysis of extracts from SK-OV3 cells untreated or estradiol-treated (0.1 uM, 20 min), using Paxillin antibody (Line 1 and 2) and Paxillin (phospho-Tyr31) antibody (Line 3 and 4).



Peptide

-

+

Figure 1. Immunohistochemical analysis of paraffin-embedded human breast carcinoma tissue using Paxillin antibody.