

## Product datasheet for **AP02710PU-S**

### **MSK1 (RPS6KA5) Rabbit Polyclonal Antibody**

#### **Product data:**

|                              |   |
|------------------------------|---|
| <b>Product Type:</b>         | Primary Antibodies  |
| <b>Applications:</b>         | WB  |
| <b>Recommended Dilution:</b> | Suitable for use in in Western blot (1:500-1:1000).   |
| <b>Reactivity:</b>           | Human, Mouse  |
| <b>Host:</b>                 | Rabbit  |
| <b>Clonality:</b>            | Polyclonal  |
| <b>Immunogen:</b>            | The antiserum was produced against synthesized non-phosphopeptide derived from human MSK1 around the phosphorylation site of serine 376 (G-Y-S <sub>p</sub> -F-V).                                |
| <b>Specificity:</b>          | The antibody was affinity-purified from rabbit antiserum by affinity-chromatography using epitope-specific immunogen.<br>MSK1 antibody AP02710PU detects endogenous levels of total MSK1 protein. |
| <b>Formulation:</b>          | PBS (without Mg <sup>2+</sup> and Ca <sup>2+</sup> ), pH 7.4, 150 mM NaCl, 0.02% Sodium Azide and 50% Glycerol.<br>State: Aff - Purified<br>State: Liquid purified Ig fraction.                   |
| <b>Concentration:</b>        | lot specific  |
| <b>Purification:</b>         | Immunoaffinity chromatography.  |
| <b>Conjugation:</b>          | Unconjugated  |
| <b>Storage:</b>              | Store the antibody (in aliquots) at -20°C.<br>Avoid repeated freezing and thawing.  |
| <b>Stability:</b>            | Shelf life: One year from despatch.   |
| <b>Gene Name:</b>            | ribosomal protein S6 kinase A5  |
| <b>Database Link:</b>        | <a href="#">Entrez Gene 9252 Human O75582</a>   |



[View online »](#)

**Background:**

MSK1 is a mitogen and stress activated protein kinase 1 which belongs to the AGC family of kinases and is related in structure to the ribosomal p70 S6 kinase subfamily. MSK1 can be activated by ERK1/2 and SAPK2/p38 MAP kinase. It is also known to be required for the phosphorylation of CREB, ATF1 H3 and HMG14 in response to mitogen and stress. Similar to RSK, MSK1 contains two kinase domains (N term and a C term). Once phosphorylated on Thr581 and Ser360 by ERK1/2 and SAPK2/p38, MSK1 autophosphorylates on at least 5 sites. Of these autophosphorylation sites Ser212 and Ser376 get phosphorylated by the C terminal kinase domain of MSK1 which is essential for the catalytic activity of the N terminal kinase domain.

**Synonyms:**

Ribosomal protein S6 kinase alpha-5, RSKL

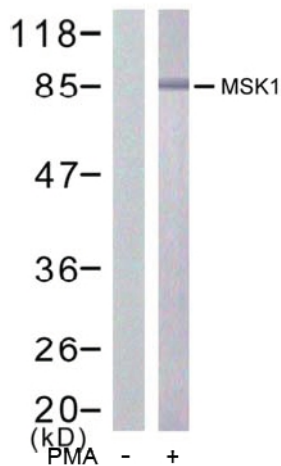
**Product images:**

Figure 1. Western blot analysis of extract from HuVec cells treated or untreated with PMA (200 nM, 30 min), using MSK1 antibody.