

## Product datasheet for **AP02709PU-N**

### BCR Rabbit Polyclonal Antibody

#### Product data:

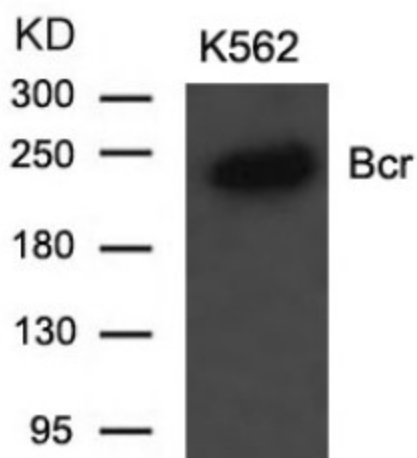
Product Type:	Primary Antibodies
Applications:	IF, WB
Recommended Dilution:	Western blot: 1/500-1/1000. Immunofluorescence: 1/100-1/200.
Reactivity:	Human, Mouse
Host:	Rabbit
Clonality:	Polyclonal
Immunogen:	The antiserum was produced against synthesized non-phosphopeptide derived from human Bcr around the phosphorylation site of tyrosine 177 (P-F-Y <sub>p</sub> -V-N).
Specificity:	This antibody AP02709PU detects endogenous levels of total Bcr protein.
Formulation:	PBS (without Mg <sup>2+</sup> and Ca <sup>2+</sup> ), pH 7.4, 150 mM NaCl, 0.02% Sodium Azide and 50% Glycerol. State: Aff - Purified State: Liquid purified Ig fraction.
Concentration:	lot specific
Purification:	Immunoaffinity Chromatography using epitope-specific immunogen.
Conjugation:	Unconjugated
Storage:	Store the antibody (in aliquots) at -20°C. Avoid repeated freezing and thawing.
Stability:	Shelf life: One year from despatch.
Gene Name:	BCR, RhoGEF and GTPase activating protein
Database Link:	<a href="#">Entrez Gene 613 Human P11274</a>
Background:	The breakpoint cluster region protein (Bcr) is best known to be involved in genomic translocation with fusion partner Abl (Cbr-Abl) causing chronic myelogenous leukemia (CML). This 160 kDa protein contains a serine/threonine kinase domain, an SH2 binding domain, a GTP/GDP exchange domain and a C-term domain which functions as a GTPase activating protein for p21rac and CDC42. Additionally, Bcr is involved in signal transduction and can down regulate Ras mediated cell signaling.



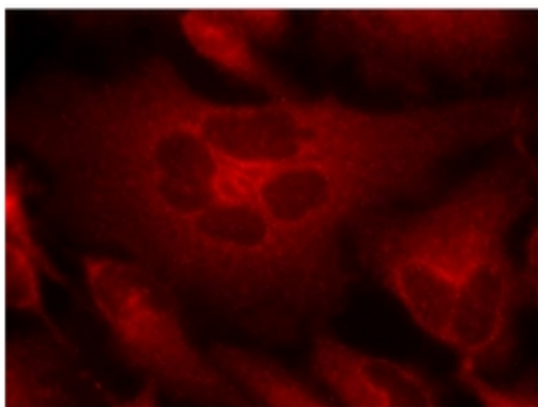
[View online »](#)

Synonyms: Breakpoint cluster region protein, BCR1, D22S11, NY-REN-26

**Product images:**



Western Blot analysis of extracts from K562 cells using Bcr antibody



Immunofluorescence staining of methanol-fixed HeLa cells using BCR antibody (Red).