

Product datasheet for **AP02708PU-S**

Ephrin B2 (EFNB2) Rabbit Polyclonal Antibody

Product data:

Product Type:	Primary Antibodies
Applications:	IF, WB
Recommended Dilution:	Western blot: 1/500-1/1000. Incubate membrane with diluted antibody in 5% nonfat milk, 1x TBS, 0.1% Tween-20 at 4°C with gentle shaking, overnight. Immunofluorescence: 1/100-1/200.
Reactivity:	Human, Mouse, Rat
Host:	Rabbit
Clonality:	Polyclonal
Immunogen:	Peptide Sequence around amino acids 328~332 (N-I-Y-Y-K) derived from Human Ephrin-B2.
Specificity:	This antibody AP02708PU detects endogenous levels of total Ephrin-B2 protein.
Formulation:	PBS (without Mg ²⁺ and Ca ²⁺), pH 7.4, 150 mM NaCl, 0.02% Sodium Azide and 50% Glycerol. State: Aff - Purified State: Liquid purified Ig fraction.
Concentration:	lot specific
Purification:	Immunoaffinity Chromatography using epitope-specific immunogen.
Conjugation:	Unconjugated
Storage:	Upon receipt, store undiluted (in aliquots) at -20°C. Avoid repeated freezing and thawing.
Stability:	Shelf life: one year from despatch.
Gene Name:	ephrin B2
Database Link:	Entrez Gene 1948 Human P52799



[View online »](#)

Background:

Ephrin receptors and their ligands, the ephrins, mediate numerous developmental processes, particularly in the nervous system. Based on their structures and sequence relationships, ephrins are divided into the ephrin-A (EFNA) class, which are anchored to the membrane by a glycosylphosphatidylinositol linkage, and the ephrin-B (EFNB) class, which are transmembrane proteins.

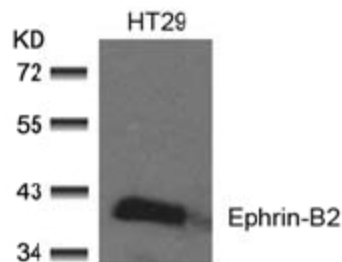
The Eph family of receptors are divided into 2 groups based on the similarity of their extracellular domain sequences and their affinities for binding ephrin-A and ephrin-B ligands. Ephrin receptors make up the largest subgroup of the receptor tyrosine kinase (RTK) family. The ligand-activated form of EphB2, which belongs to the Tyr family of protein kinases, interacts with multiple proteins, including GTPase-activating protein (RASGAP) and also interacts with PRKCABP and GRIP1. This type I membrane protein is expressed in brain, heart, lung, kidney, placenta, pancreas, liver and skeletal muscle. It is preferentially expressed in fetal brain. Ephrin-B2 also binds EphA4, EphB1, EphB2, EphB3 and EphB4. Ephrin-B2 can be detected on monocytes, mesangial cells, CD34+ stem cells, bone marrow fibroblasts, activated melanocytes and melanoma cells, and pre-artery endothelial cells.

Synonyms:

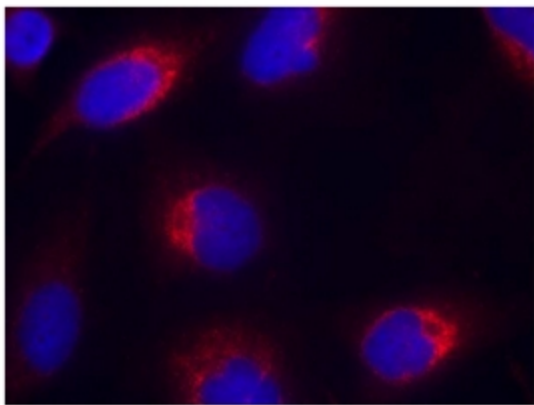
EFNB2, EPLG5, HTKL, LERK5, HTK-L, LERK-5, HTK ligand

Note:

Molecular Weight: 37 kDa

Product images:

Western Blot analysis of extracts from HT29 cells using Ephrin-B2 antibody



Immunofluorescence staining of methanol-fixed HeLa cells using Ephrin-B2 antibody (Red)