

Product datasheet for **AP02704PU-S**

AMPK alpha 1 (PRKAA1) Rabbit Polyclonal Antibody

Product data:

| | |
|-----------------------|---|
| Product Type: | Primary Antibodies |
| Applications: | IF, IHC, WB |
| Recommended Dilution: | Western Blot: 1/500-1/1000. Immunofluorescence: 1/100-1/200. Immunohistochemistry on Paraffin Sections 1/50-1/100. |
| Reactivity: | Human, Mouse, Rat |
| Host: | Rabbit |
| Clonality: | Polyclonal |
| Immunogen: | The antiserum was produced against synthesized non-phosphopeptide derived from human AMPK1 alpha-1 around the phosphorylation site of threonine 174 (L-R-Tp-S-C). |
| Specificity: | This antibody AP02704PU detects endogenous levels of total AMPK alpha-1/AMPK alpha-2 protein. |
| Formulation: | PBS (without Mg ²⁺ and Ca ²⁺), pH 7.4, 150 mM NaCl, 0.02% Sodium Azide and 50% Glycerol. State: Aff - Purified State: Liquid purified Ig fraction. |
| Concentration: | lot specific |
| Purification: | Immunoaffinity Chromatography using epitope-specific immunogen. |
| Conjugation: | Unconjugated |
| Storage: | Store the antibody (in aliquots) at -20°C. Avoid repeated freezing and thawing. |
| Stability: | Shelf life: One year from despatch. |
| Gene Name: | protein kinase AMP-activated catalytic subunit alpha 1 |
| Database Link: | Entrez Gene 5562 Human Q13131 |
| Synonyms: | AMPK1, AMPK2, PRKAA1, PRKAA2, AMPK alpha-1, AMPK alpha-2 |



[View online »](#)

Product images:

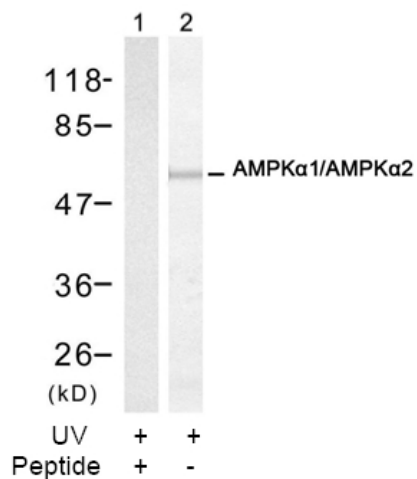
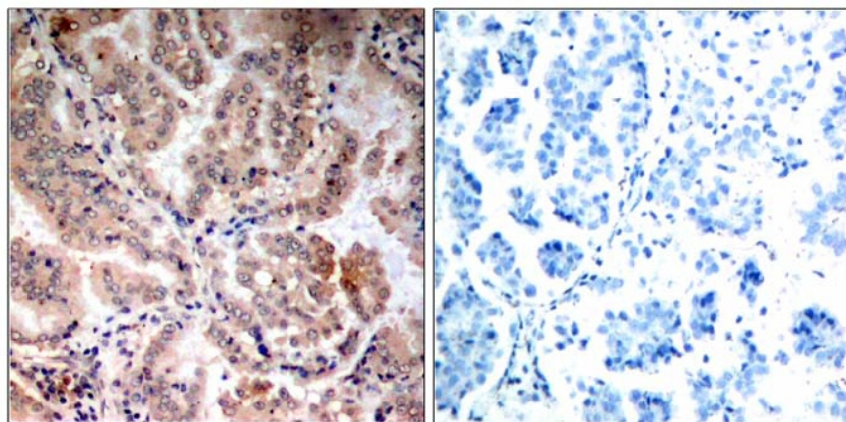


Figure 2. Western blot analysis of extracts from HT-29 cells, using AMPK alpha-1/AMPK alpha-2 Antibody (#, Lane 1 and 2).



Peptide

-

+

Figure 1. Immunohistochemical analysis of paraffin-embedded human lung carcinoma tissue, using AMPK alpha-1/2 antibody.

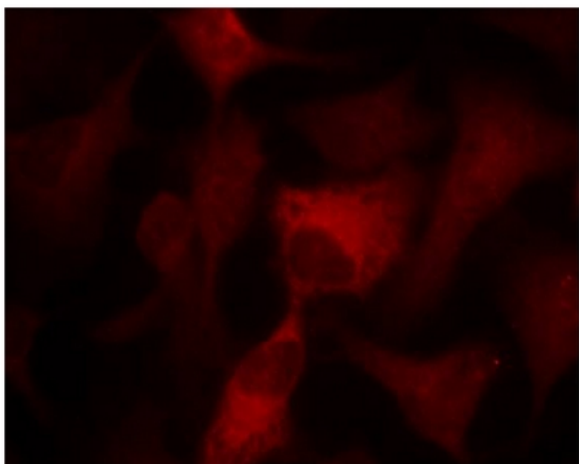


Figure 2. Immunofluorescence staining of methanol-fixed HeLa cells using AMPK alpha-1/AMPK alpha-2 Antibody (Red).