

## Product datasheet for **AP02704PU-N**

### AMPK alpha 1 (PRKAA1) Rabbit Polyclonal Antibody

#### Product data:

Product Type:	Primary Antibodies
Applications:	IF, IHC, WB
Recommended Dilution:	Western Blot: 1/500-1/1000. Immunofluorescence: 1/100-1/200. Immunohistochemistry on Paraffin Sections 1/50-1/100.
Reactivity:	Human, Mouse, Rat
Host:	Rabbit
Clonality:	Polyclonal
Immunogen:	The antiserum was produced against synthesized non-phosphopeptide derived from human AMPK1 alpha-1 around the phosphorylation site of threonine 174 (L-R-Tp-S-C).
Specificity:	This antibody AP02704PU detects endogenous levels of total AMPK alpha-1/AMPK alpha-2 protein.
Formulation:	PBS (without Mg <sup>2+</sup> and Ca <sup>2+</sup> ), pH 7.4, 150 mM NaCl, 0.02% Sodium Azide and 50% Glycerol. State: Aff - Purified State: Liquid purified Ig fraction.
Concentration:	lot specific
Purification:	Immunoaffinity Chromatography using epitope-specific immunogen.
Conjugation:	Unconjugated
Storage:	Store the antibody (in aliquots) at -20°C. Avoid repeated freezing and thawing.
Stability:	Shelf life: One year from despatch.
Gene Name:	protein kinase AMP-activated catalytic subunit alpha 1
Database Link:	<a href="#">Entrez Gene 5562 Human Q13131</a>
Synonyms:	AMPK1, AMPK2, PRKAA1, PRKAA2, AMPK alpha-1, AMPK alpha-2



[View online »](#)

Product images:

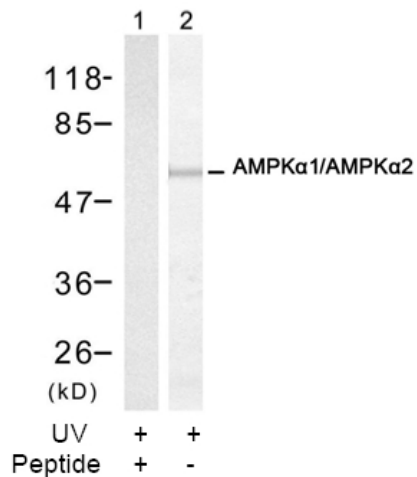
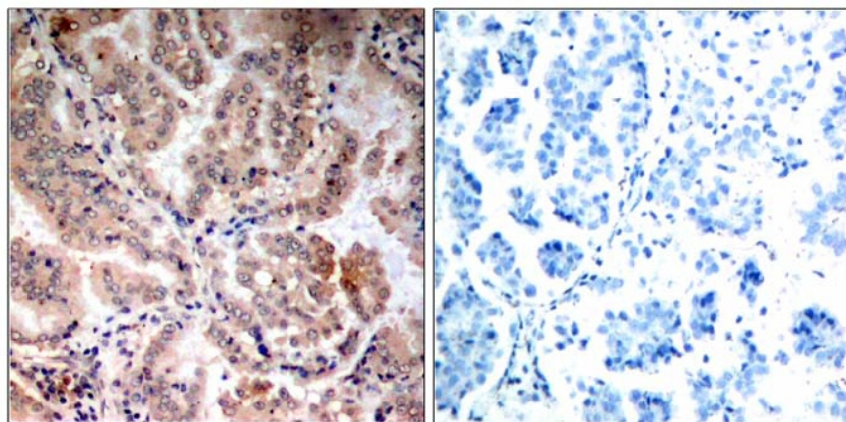


Figure 2. Western blot analysis of extracts from HT-29 cells, using AMPK alpha-1/AMPK alpha-2 Antibody (#, Lane 1 and 2).



Peptide

-

+

Figure 1. Immunohistochemical analysis of paraffin-embedded human lung carcinoma tissue, using AMPK alpha-1/2 antibody.

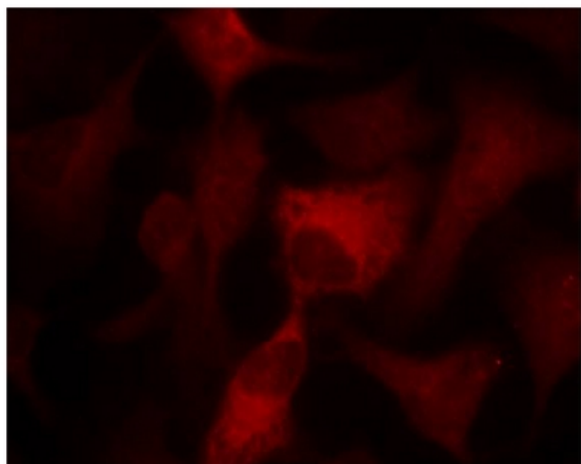


Figure 2. Immunofluorescence staining of methanol-fixed HeLa cells using AMPK alpha-1/AMPK alpha-2 Antibody (Red).