

## Product datasheet for **AP02702PU-N**

### alpha Adducin (ADD1) Rabbit Polyclonal Antibody

#### Product data:

Product Type:	Primary Antibodies
Applications:	IF, IHC, WB
Recommended Dilution:	<b>Western blot:</b> 1/500 - 1/1000; Incubate membrane with diluted antibody in 5% nonfat milk, 1X TBS, 0,1% Tween-20 at 4°C with gentle shaking, overnight. <b>Immunohistochemistry on paraffin sections:</b> 1/50 - 1/100. <b>Immunofluorescence:</b> 1/100 - 1/200.
Reactivity:	Human, Mouse, Rat
Host:	Rabbit
Clonality:	Polyclonal
Immunogen:	Synthetic non-phosphopeptide derived from human ADD1 around the phosphorylation site of serine 726 (T-P-Sp-F-L).
Specificity:	ADD1 antibody detects endogenous levels of total ADD1 protein.
Formulation:	PBS (without Mg <sup>2+</sup> and Ca <sup>2+</sup> ), pH 7.4, 150 mM NaCl, 0.02% Sodium Azide and 50% Glycerol. State: Aff - Purified State: Liquid purified Ig fraction
Concentration:	lot specific
Purification:	Immunoaffinity chromatography
Conjugation:	Unconjugated
Storage:	Store the antibody (in aliquots) at -20°C. Avoid repeated freezing and thawing.
Stability:	Shelf life: One year from despatch.
Gene Name:	adducin 1
Database Link:	<a href="#">Entrez Gene 118 Human P35611</a>



[View online »](#)

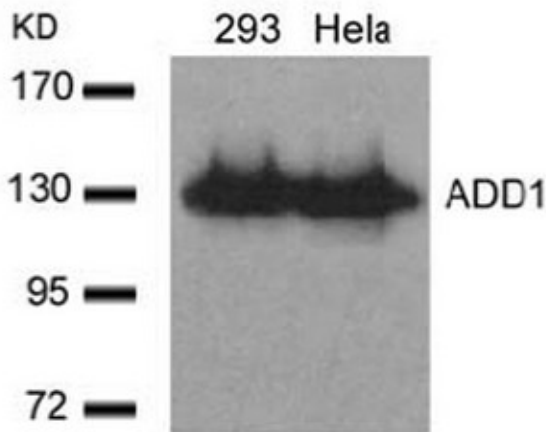
**Background:**

Alpha adducin is a 80-120 kD member of the aldolase class II family and adducin subfamily. This protein has three isoforms that interact as heterodimers alpha/beta, and beta/gamma. The molecular weights for the various isoforms alpha=120 kD, beta=110kD; gamma=80kD. The alpha adducin protein is a ubiquitously expressed cytoskeletal protein that binds with high affinity to Ca<sup>2+</sup>/calmodulin and acts as a substrate for protein kinases A and C. This protein has been reported to promote the assembly of the spectrinactin network. Polymorphisms in alpha adducin are associated with cardiovascular disease and hypertension. Alpha adducin has been reported to interact with calmodulin. When phosphorylated by Rho-kinase, alpha adducin can regulate membrane ruffling and cell motility.

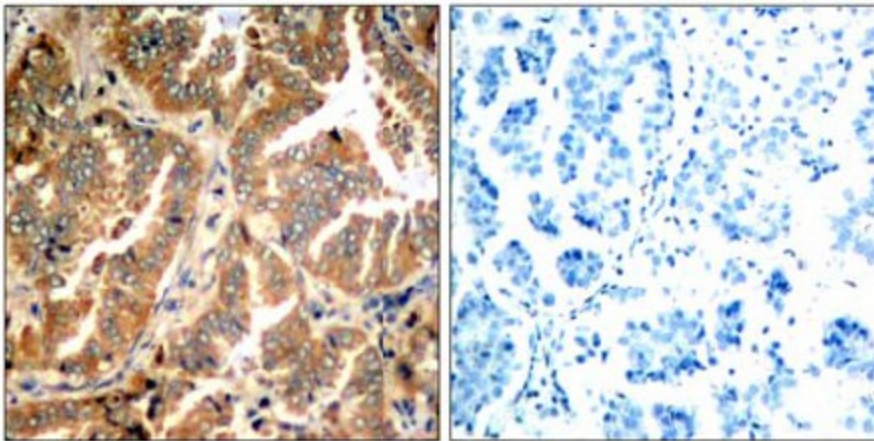
**Synonyms:**

ADDA

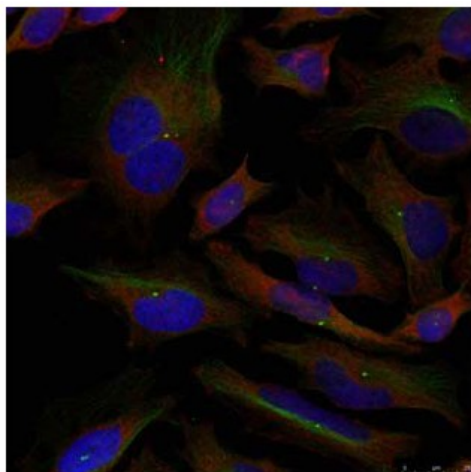
**Product images:**



Western Blot analysis of extracts from 293 and HeLa cells using ADD1 antibody



Immunohistochemical analysis of paraffin-embedded human lung carcinoma tissue using ADD1 Antibody (left) or the same antibody preincubated with blocking peptide (right)



Immunofluorescence staining of methanol-fixed HeLa cells using ADD1 antibody