

## Product datasheet for **AP02701PU-N**

### 14-3-3 zeta (YWHAZ) Rabbit Polyclonal Antibody

#### Product data:

Product Type:	Primary Antibodies
Applications:	IHC, WB
Recommended Dilution:	Western blot: 1/500-1/1000. Immunohistochemistry: 1/50-1/100.
Reactivity:	Human, Mouse
Host:	Rabbit
Clonality:	Polyclonal
Immunogen:	The antiserum was produced against synthesized non-phosphopeptide derived from human 14-3-3 zeta around the phosphorylation site of serine 58 (R-S- <i>Sp</i> -W-R).
Specificity:	The antibody was affinity-purified from rabbit antiserum by affinity-chromatography using epitope-specific immunogen. This antibody detects endogenous levels of total 14-3-3 zeta protein.
Formulation:	PBS (without Mg <sup>2+</sup> and Ca <sup>2+</sup> ), pH 7.4, 150 mM NaCl, 0.02% Sodium Azide and 50% Glycerol. State: Aff - Purified State: Liquid purified Ig fraction.
Concentration:	lot specific
Purification:	Immunoaffinity Chromatography.
Conjugation:	Unconjugated
Storage:	Store the antibody (in aliquots) at -20°C. Avoid repeated freezing and thawing.
Stability:	Shelf life: One year from despatch.
Gene Name:	tyrosine 3-monooxygenase/tryptophan 5-monooxygenase activation protein zeta
Database Link:	<a href="#">Entrez Gene 7534 Human P63104</a>
Synonyms:	YWHAZ, KCIP-1



[View online »](#)

Product images:

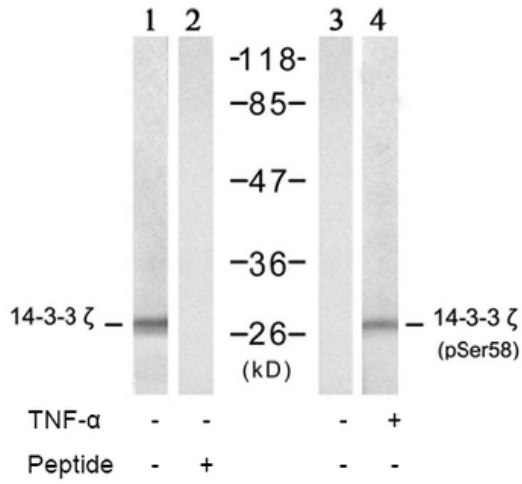
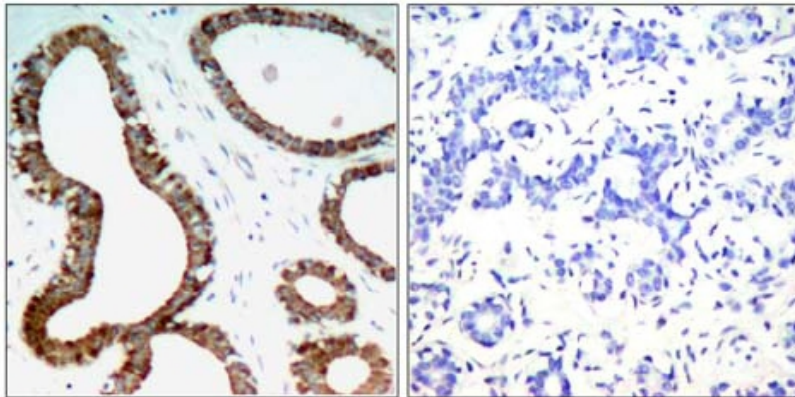


Figure 2. Western blot analysis of extract from NIH/3T3 cells, untreated or treated with TNF-α (20 ng/ml, 5 min), using 14-3-3 zeta antibody (lane 1 and 2) and 14-3-3 zeta (Phospho-Ser58) antibody (lane 3 and 4).



Peptide - +

Figure 1. Immunohistochemical analysis of paraffin-embedded human breast carcinoma tissue, using 14-3-3 zeta antibody.