

Product datasheet for **AP02700PU-N**

PLCG 2 (PLCG2) Rabbit Polyclonal Antibody

Product data:

Product Type:	Primary Antibodies
Applications:	IF, WB
Recommended Dilution:	Western blot: 1/500-1/1000. Immunofluorescence: 1/100-1/200.
Reactivity:	Human, Mouse, Rat
Host:	Rabbit
Clonality:	Polyclonal
Immunogen:	The antiserum was produced against synthesized non-phosphopeptide derived from human PLCγ2 around the phosphorylation site of tyrosine 753 (S-L-Y ρ -D-V).
Specificity:	This antibody AP02700PU detects endogenous levels of total PLCG2 protein.
Formulation:	PBS (without Mg ²⁺ and Ca ²⁺), pH 7.4, 150 mM NaCl, 0.02% Sodium Azide and 50% Glycerol. State: Aff - Purified State: Liquid purified Ig fraction.
Concentration:	lot specific
Purification:	Immunoaffinity Chromatography using epitope-specific immunogen.
Conjugation:	Unconjugated
Storage:	Store the antibody (in aliquots) at -20°C. Avoid repeated freezing and thawing.
Stability:	Shelf life: One year from despatch.
Gene Name:	phospholipase C gamma 2
Database Link:	Entrez Gene 5336 Human P16885
Synonyms:	Phospholipase C-gamma-2, PLC-gamma-2, Phospholipase C-IV, PLC-IV



[View online »](#)

Product images:

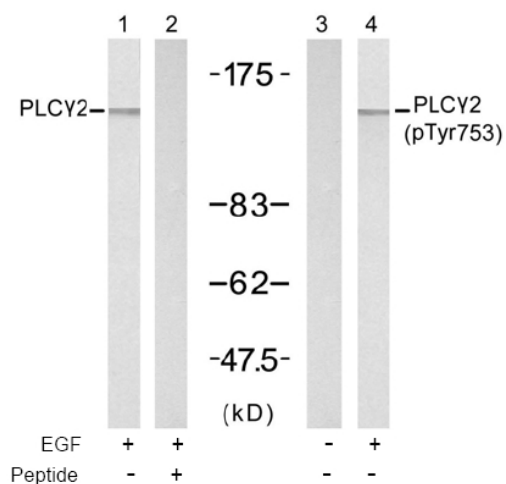


Figure 1. Western blot analysis of extracts from A431 cells, untreated or treated with EGF (200 ng/ml, 5 min), using PLCG2 antibody (Lane 1 and 2) and PLCG2 (phospho-Tyr753) antibody (Lane 3 and 4).

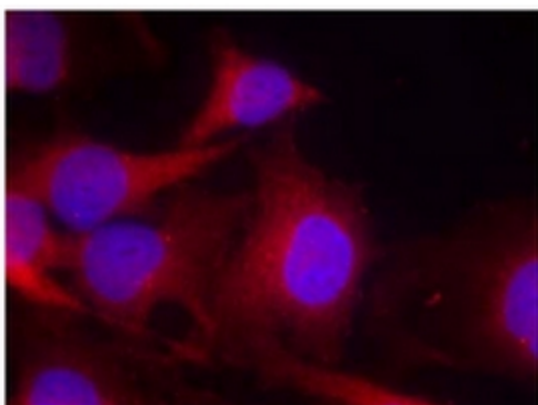


Figure 2. Immunofluorescence staining of methanol-fixed HeLa cells using PLCG2 antibody (Red).