

Product datasheet for **AP02697PU-S**

S6K1 (RPS6KB1) Rabbit Polyclonal Antibody

Product data:

Product Type:	Primary Antibodies
Applications:	IF, WB
Recommended Dilution:	Western blot: 1/500-1/1000. Immunofluorescence: 1/100-1/200.
Reactivity:	Human, Mouse, Rat
Host:	Rabbit
Clonality:	Polyclonal
Immunogen:	The antiserum was produced against synthesized non-phosphopeptide derived from human p70 S6 Kinase around the phosphorylation site of threonine 389 (G-F-T-Y-V).
Specificity:	This antibody AP02697PU detects endogenous levels of total p70 S6 Kinase protein.
Formulation:	PBS (without Mg ²⁺ and Ca ²⁺), pH 7.4, 150 mM NaCl, 0.02% Sodium Azide and 50% Glycerol. State: Aff - Purified State: Liquid purified Ig fraction.
Concentration:	lot specific
Purification:	Immunoaffinity Chromatography using epitope-specific immunogen.
Conjugation:	Unconjugated
Storage:	Store the antibody (in aliquots) at -20°C. Avoid repeated freezing and thawing.
Stability:	Shelf life: One year from despatch.
Gene Name:	ribosomal protein S6 kinase B1
Database Link:	Entrez Gene 6198 Human P23443
Synonyms:	Ribosomal protein S6 kinase I, S6K1, p70 S6 kinase alpha, p70 S6K-alpha, p70 S6KA, Serine/threonine-protein kinase 14A



[View online »](#)

Product images:

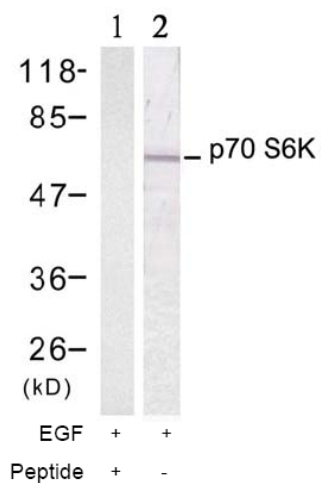


Figure 1. Western blot analysis of extract from 293 cells treated with EGF (200 ng/ml, 15 min), using p70 S6 Kinase antibody (Lane 1 and 2).

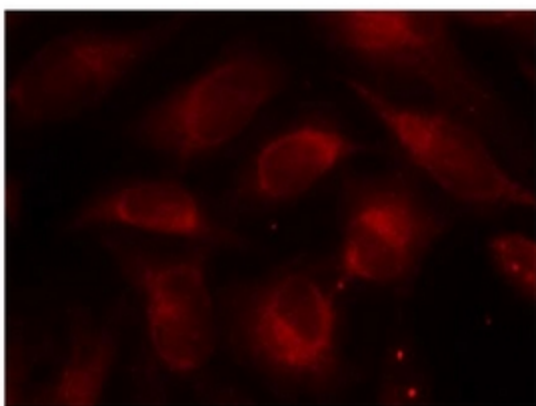


Figure 2. Immunofluorescence staining of methanol-fixed HeLa cells using p70 S6 kinase antibody (Red).