

Product datasheet for **AP02696PU-N**

DNA PKcs (PRKDC) Rabbit Polyclonal Antibody

Product data:

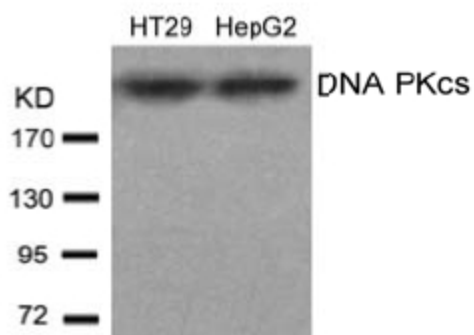
Product Type:	Primary Antibodies
Applications:	WB
Recommended Dilution:	Western blot: 1/500-1/1000. Incubate membrane with diluted antibody in 5% nonfat milk, 1x TBS, 0.1% Tween-20 at 4°C with gentle shaking overnight.
Reactivity:	Human
Host:	Rabbit
Clonality:	Polyclonal
Immunogen:	Peptide sequence around amino acids 2607~2611 (V-E-T-Q-A) derived from Human DNA PK.
Specificity:	This antibody detects endogenous levels of total DNA PKcs protein.
Formulation:	PBS (without Mg ²⁺ and Ca ²⁺), pH 7.4, 150 mM NaCl, 0.02% Sodium Azide and 50% Glycerol. State: Aff - Purified State: Liquid purified Ig fraction
Concentration:	lot specific
Purification:	Immunoaffinity Chromatography using epitope-specific peptide.
Conjugation:	Unconjugated
Storage:	Store the antibody (in aliquots) at -20°C. Avoid repeated freezing and thawing.
Stability:	Shelf life: One year from despatch.
Gene Name:	protein kinase, DNA-activated, catalytic polypeptide
Database Link:	Entrez Gene 5591 Human P78527
Background:	DNA PK is the key component of the non-homologous end-joining (NHEJ) pathway of DSB repair in mammalian cells. DNA PK consists of a heterodimeric DNA-binding subunit (Ku70/80) and an approximately 465 kDa catalytic subunit (DNA PKcs). DNA PKcs is a serine/threonine protein kinase whose activity is greatly stimulated by its recruitment to DNA breaks by the Ku heterodimer.
Synonyms:	DNPK1, p460, HYRC, HYRC1



[View online »](#)

Note: **Molecular Weight:** 450 kDa

Product images:



Western blot analysis of extract from HT29 and HepG2 cells using DNA PKcs antibody