

## Product datasheet for **AP02687PU-S**

### SRC Rabbit Polyclonal Antibody

#### Product data:

Product Type:	Primary Antibodies
Applications:	IHC, WB
Recommended Dilution:	Western blot (1/500-1/1000). Immunohistochemistry on Paraffin Sections (1/50-1/100).
Reactivity:	Human, Mouse, Rat
Host:	Rabbit
Clonality:	Polyclonal
Immunogen:	The antiserum was produced against synthesized non-phosphopeptide derived from human Src around the phosphorylation site of tyrosine 529 (P-Q-Yp-Q-P).
Specificity:	The antibody was affinity-purified from rabbit antiserum by affinity-chromatography using epitope-specific immunogen. Src antibody AP02687PU detects endogenous levels of total Src protein.
Formulation:	PBS (without Mg <sup>2+</sup> and Ca <sup>2+</sup> ), pH 7.4, 150 mM NaCl, 0.02% Sodium Azide as preservative and 50% Glycerol. State: Aff - Purified State: Liquid purified Ig fraction.
Concentration:	lot specific
Purification:	Immunoaffinity Chromatography.
Conjugation:	Unconjugated
Storage:	Store the antibody undiluted (in aliquots) at -20°C. Avoid repeated freezing and thawing.
Stability:	Shelf life: One year from despatch.
Gene Name:	SRC proto-oncogene, non-receptor tyrosine kinase
Database Link:	<a href="#">Entrez Gene 6714 Human P12931</a>
Synonyms:	c-Src, pp60c-src



[View online »](#)

Product images:

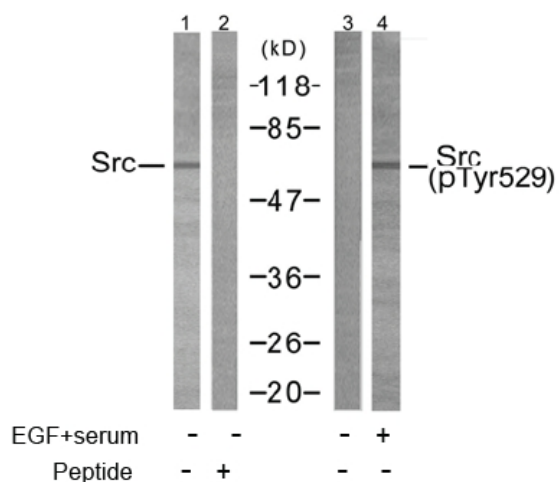


Figure 2. Western blot analysis of extracts from 293 cells using Src antibody (Lane 1 and 2) and Src (phospho-Tyr529) antibody (Lane 3 and 4).

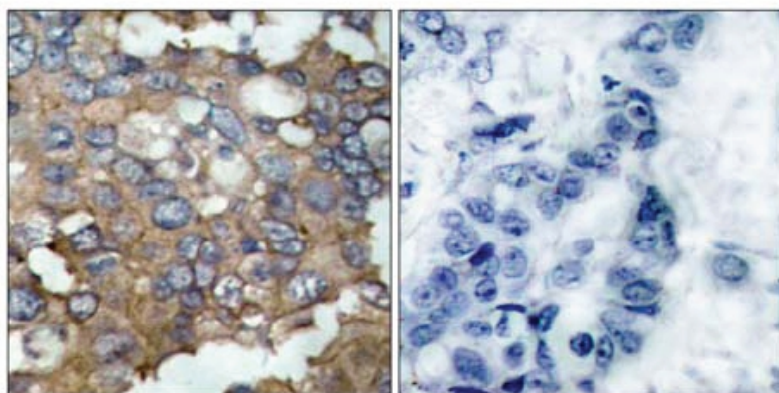


Figure 1. Immunohistochemical analysis of paraffin-embedded human breast carcinoma tissue using Src antibody.