

## Product datasheet for **AP02685PU-S**

### Cofilin 1 (CFL1) Rabbit Polyclonal Antibody

#### Product data:

Product Type:	Primary Antibodies
Applications:	IHC, WB
Recommended Dilution:	<b>Western blot:</b> 1/500-1/1000. Incubate membrane with diluted antibody in 5% nonfat milk, 1xTBS, 0.1% Tween-20 at 4°C with gentle shaking overnight. <b>Immunohistochemistry on Paraffin Sections:</b> 1/50-1/100.
Reactivity:	Human, Mouse, Rat
Host:	Rabbit
Clonality:	Polyclonal
Immunogen:	Peptide sequence around amino acids 1~5 ((M-A-S-G-V) derived from Human Cofilin.
Specificity:	This antibody detects endogenous levels of total Cofilin protein.
Formulation:	PBS (without Mg <sup>2+</sup> and Ca <sup>2+</sup> ), pH 7.4 containing 150 mM NaCl, 0.02% Sodium Azide and 50% Glycerol. State: Aff - Purified State: Liquid purified Ig fraction.
Concentration:	lot specific
Purification:	Affinity Chromatography using epitope-specific immunogen.
Conjugation:	Unconjugated
Storage:	Store undiluted at 2-8°C for one month or (in aliquots) at -20°C for longer. Avoid repeated freezing and thawing.
Stability:	Shelf life: one year from despatch.
Gene Name:	cofilin 1
Database Link:	<a href="#">Entrez Gene 1072 Human P23528</a>



[View online »](#)

**Background:**

Cofilin is a small phosphoinositide sensitive, actin binding protein capable of depolymerizing actin filaments in vitro. Under certain conditions, it fragments the filaments and accelerates actin subunit dissociation from their 'pointed' (minus) ends. Cofilin binds stoichiometrically to monomeric G-actin and to actin protomers in filaments in an apparent pH-dependent, Ca<sup>2+</sup>-independent manner. Cofilin intercalates between longitudinally associated actin monomers within the filament and distorts its helical twist. Cofilin is ubiquitous in tissues of eukaryotes and is especially abundant in neuronal tissues. It is essential for viability and is important for many cellular processes involving actin remodeling such as motility at the leading edge of cells, polarized cell growth, endocytosis, phagocytosis, cellular activation, cytokinesis, and pathogen intracellular motility.

**Synonyms:**

CFL1, CFL, p18

**Note:**

Molecular Weight: 19 kDa

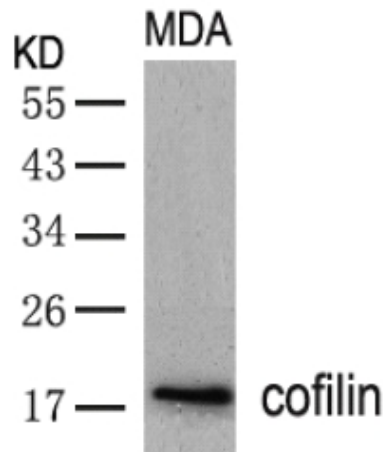
**Product images:**


Figure 2. Western blot analysis of extracts from MDA cells using Cofilin antibody.

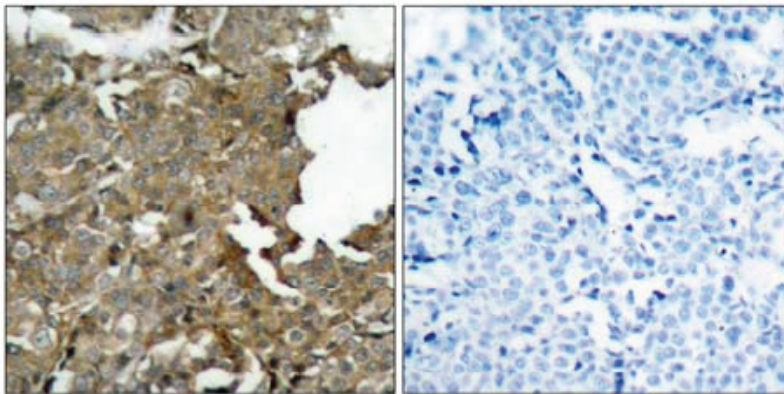


Figure 1. Immunohistochemical analysis of paraffin-embedded human breast carcinoma tissue using Cofilin antibody.

Peptide

-

+