

## Product datasheet for **AP02683PU-N**

### FOXO4 Rabbit Polyclonal Antibody

#### Product data:

Product Type:	Primary Antibodies
Applications:	IHC, WB
Recommended Dilution:	Suitable for use in Western blot (1:500-1:1000) and Immunohistochemistry (1:50-1:100).
Reactivity:	Human, Mouse, Rat
Host:	Rabbit
Clonality:	Polyclonal
Immunogen:	The antiserum was produced against synthesized non-phosphopeptide derived from human AFX around the phosphorylation site of serine 197 (A-A-Sp-M-D).
Specificity:	The antibody was affinity-purified from rabbit antiserum by affinity-chromatography using epitope-specific immunogen. AFX antibody AP02683PU detects endogenous levels of total AFX protein.
Formulation:	PBS (without Mg <sup>2+</sup> and Ca <sup>2+</sup> ), pH 7.4, 150 mM NaCl, 0.02% Sodium Azide and 50% Glycerol. State: Aff - Purified State: Liquid purified Ig fraction.
Concentration:	lot specific
Purification:	Immunoaffinity chromatography.
Conjugation:	Unconjugated
Storage:	Store the antibody (in aliquots) at -20°C. Avoid repeated freezing and thawing.
Stability:	Shelf life: One year from despatch.
Gene Name:	forkhead box O4
Database Link:	<a href="#">Entrez Gene 4303 Human P98177</a>
Background:	FOXO4 is a forkhead transcription factor involved in the regulation of the insulin signaling pathway. It binds to insulin-response elements (IREs) and can activate transcription of IGFBP1. FOXO4 down-regulates expression of HIF1A and suppresses hypoxia-induced transcriptional activation of HIF1A-modulated genes. It is also involved in negative regulation of the cell cycle.



[View online »](#)

Synonyms: Forkhead box protein O4

Product images:

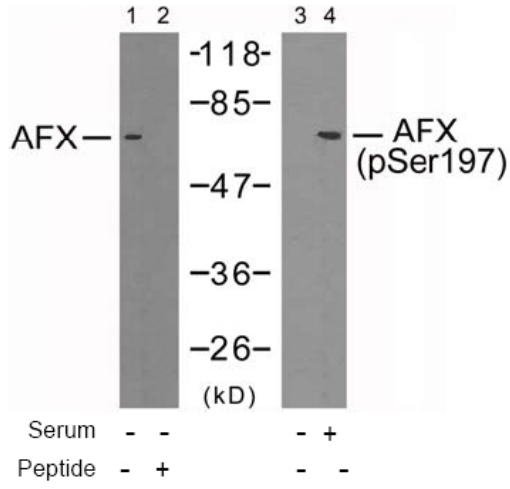
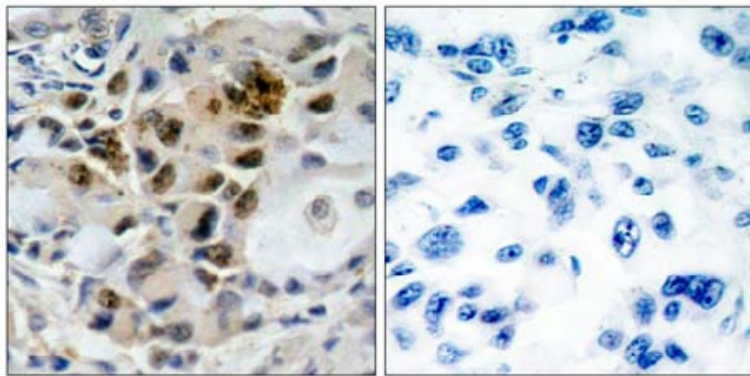


Figure 2. Western blot analysis of extracts from 293 cells using AFX antibody (Lane 1 and 2) and AFX (phospho-Ser197) antibody (Lane 3 and 4).



Peptide - +

Figure 1. Immunohistochemical analysis of paraffin-embedded human lung carcinoma tissue, using AFX antibody.