

Product datasheet for **AP02682PU-N**

FOXO1 Rabbit Polyclonal Antibody

Product data:

Product Type:	Primary Antibodies
Applications:	IHC, WB
Recommended Dilution:	Suitable for use in Western blot (1:500-1:1000) and Immunohistochemistry (1:50-1:100).
Reactivity:	Human, Mouse
Host:	Rabbit
Clonality:	Polyclonal
Immunogen:	The antiserum was produced against synthesized non-phosphopeptide derived from human FKHR around the phosphorylation site of serine 319 (T-S- <i>Sp</i> -N-A).
Specificity:	The antibody was affinity-purified from rabbit antiserum by affinity-chromatography using epitope-specific immunogen. FKHR antibody AP02682PU detects endogenous levels of total FKHR protein.
Formulation:	PBS (without Mg ²⁺ and Ca ²⁺), pH 7.4, 150 mM NaCl, 0.02% Sodium Azide and 50% Glycerol. State: Aff - Purified State: Liquid purified Ig fraction.
Concentration:	lot specific
Purification:	Immunoaffinity chromatography.
Conjugation:	Unconjugated
Storage:	Store the antibody (in aliquots) at -20°C. Avoid repeated freezing and thawing.
Stability:	Shelf life: One year from despatch.
Gene Name:	forkhead box O1
Database Link:	Entrez Gene 2308 Human Q12778



[View online »](#)

Background:

FOXO1A (FKHR or ForkHead in Rhabdomyosarcoma) is a 70 kDa protein which is a member of a subfamily of the forkhead homeotic gene family of transcription factors. Recent studies have shown that this protein can act as either a coactivator or a corepressor of nuclear receptor activity. This action is mediated through the LXXLL motif found in the C terminus of the FOXO1A protein. The specific function of the gene has not yet been determined; however, it may play a role in myogenic growth and differentiation. Chromosomal aberrations involving FOXO1A are a cause of rhabdomyosarcoma 2 (RMS2); also known as alveolar rhabdomyosarcoma.

Synonyms:

Forkhead Box Protein O1, FOXO1, FKHR

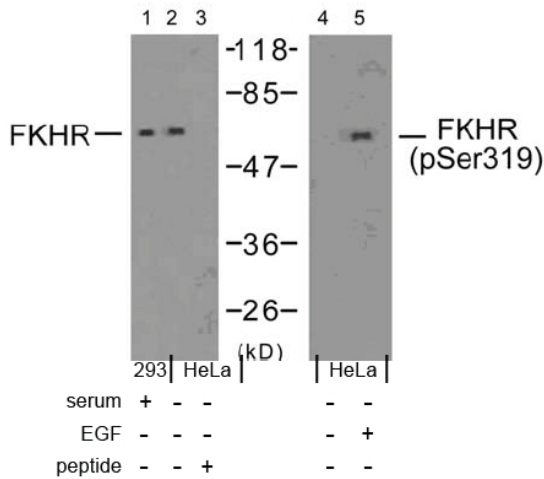
Product images:


Figure 2. Western blot analysis of extracts using FKHR antibody (Lane 1, 2 and 3) and FKHR (phospho-Ser319) antibody (Lane 4 and 5).

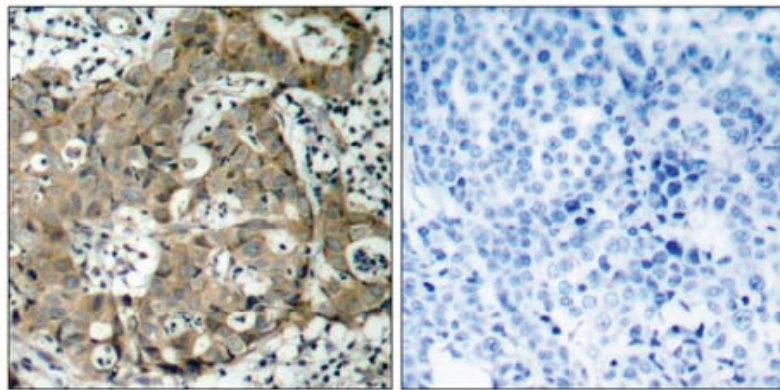


Figure 1. Immunohistochemical analysis of paraffin-embedded human breast carcinoma tissue using FKHR antibody.

Peptide

-

+