

Product datasheet for **AP02681PU-S**

PAK1 Rabbit Polyclonal Antibody

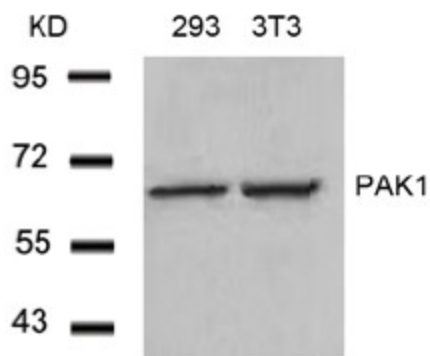
Product data:

| | |
|-----------------------|---|
| Product Type: | Primary Antibodies |
| Applications: | IF, IHC, WB |
| Recommended Dilution: | Western blot: 1/500~1/1000. Immunofluorescence: 1/100~1/200. Immunohistochemistry on Paraffin-Embedded Sections: 1/50-1/100. |
| Reactivity: | Human, Mouse, Rat |
| Host: | Rabbit |
| Clonality: | Polyclonal |
| Immunogen: | The antiserum was produced against synthesized non-phosphopeptide derived from human PAK1 around the phosphorylation site of threonine 212 (P-V-Tp-P-T). |
| Specificity: | This antibody AP02681PU detects endogenous levels of total PAK1 protein. |
| Formulation: | PBS (without Mg ²⁺ and Ca ²⁺), pH 7.4, 150 mM NaCl, 0.02% Sodium Azide and 50% Glycerol. State: Aff - Purified State: Liquid purified Ig fraction. |
| Concentration: | lot specific |
| Purification: | Immunoaffinity Chromatography using epitope-specific immunogen. |
| Conjugation: | Unconjugated |
| Storage: | Store the antibody (in aliquots) at -20°C. Avoid repeated freezing and thawing. |
| Stability: | Shelf life: One year from despatch. |
| Gene Name: | p21 (RAC1) activated kinase 1 |
| Database Link: | Entrez Gene 5058 Human Q13153 |
| Synonyms: | PAK 1, PAK-1, Alpha-PAK, PAK alpha, p21-activated kinase 1, p65-PAK |

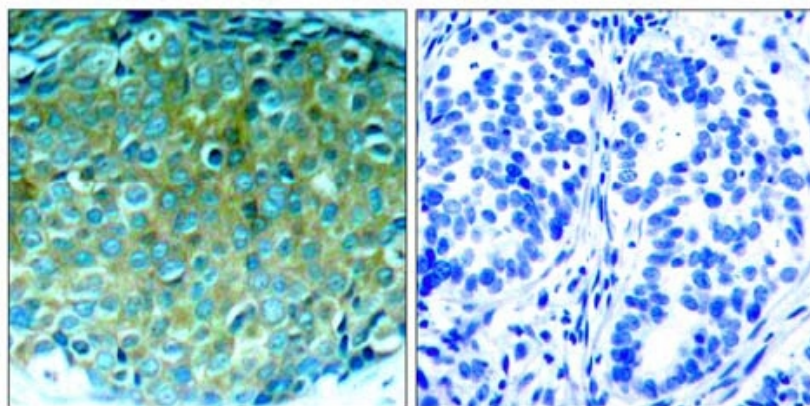


[View online »](#)

Product images:

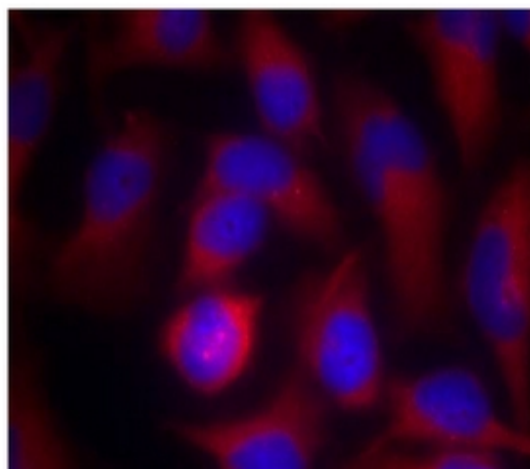


Western Blot analysis of extracts from 293 and 3T3 cells using PAK1 antibody



Immunohistochemical analysis of paraffin-embedded human breast carcinoma tissue, using PAK1 antibody.

Peptide - +



Immunofluorescence staining of methanol-fixed HeLa cells using PAK1 antibody (Red).

