

Product datasheet for **AP02681PU-N**

PAK1 Rabbit Polyclonal Antibody

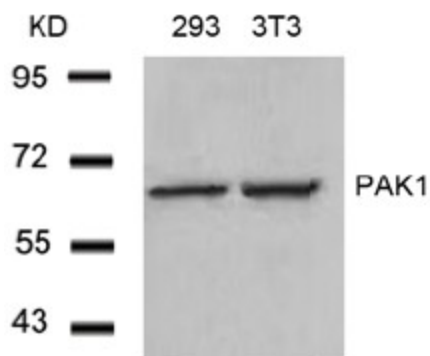
Product data:

Product Type:	Primary Antibodies
Applications:	IF, IHC, WB
Recommended Dilution:	Western blot: 1/500~1/1000. Immunofluorescence: 1/100~1/200. Immunohistochemistry on Paraffin-Embedded Sections: 1/50-1/100.
Reactivity:	Human, Mouse, Rat
Host:	Rabbit
Clonality:	Polyclonal
Immunogen:	The antiserum was produced against synthesized non-phosphopeptide derived from human PAK1 around the phosphorylation site of threonine 212 (P-V-Tp-P-T).
Specificity:	This antibody AP02681PU detects endogenous levels of total PAK1 protein.
Formulation:	PBS (without Mg ²⁺ and Ca ²⁺), pH 7.4, 150 mM NaCl, 0.02% Sodium Azide and 50% Glycerol. State: Aff - Purified State: Liquid purified Ig fraction.
Concentration:	lot specific
Purification:	Immunoaffinity Chromatography using epitope-specific immunogen.
Conjugation:	Unconjugated
Storage:	Store the antibody (in aliquots) at -20°C. Avoid repeated freezing and thawing.
Stability:	Shelf life: One year from despatch.
Gene Name:	p21 (RAC1) activated kinase 1
Database Link:	Entrez Gene 5058 Human Q13153
Synonyms:	PAK 1, PAK-1, Alpha-PAK, PAK alpha, p21-activated kinase 1, p65-PAK

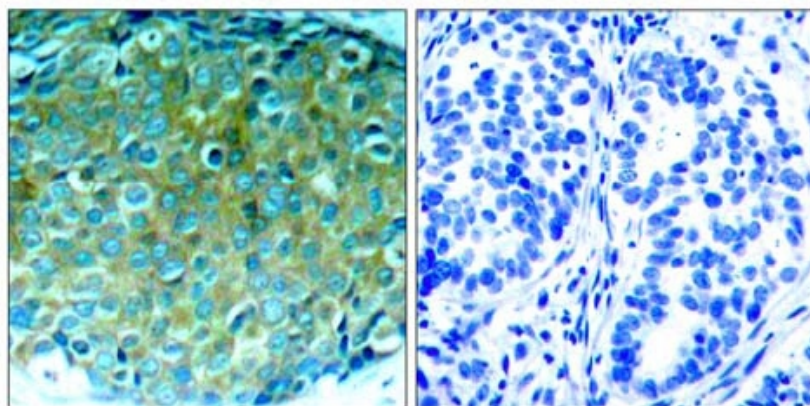


[View online »](#)

Product images:

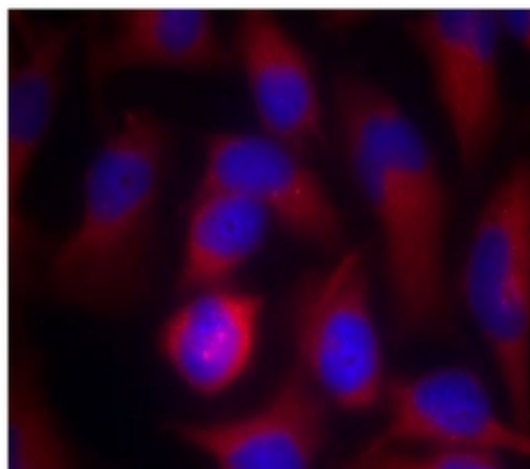


Western Blot analysis of extracts from 293 and 3T3 cells using PAK1 antibody



Immunohistochemical analysis of paraffin-embedded human breast carcinoma tissue, using PAK1 antibody.

Peptide - +



Immunofluorescence staining of methanol-fixed HeLa cells using PAK1 antibody (Red).

